



## 4b Shoreline Erosion Risk

Aim - to determine and quantify the areas at risk from coastal erosion for 0–20, 20–50 and 50–100 years



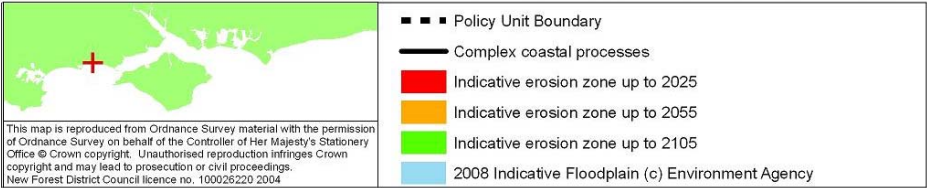
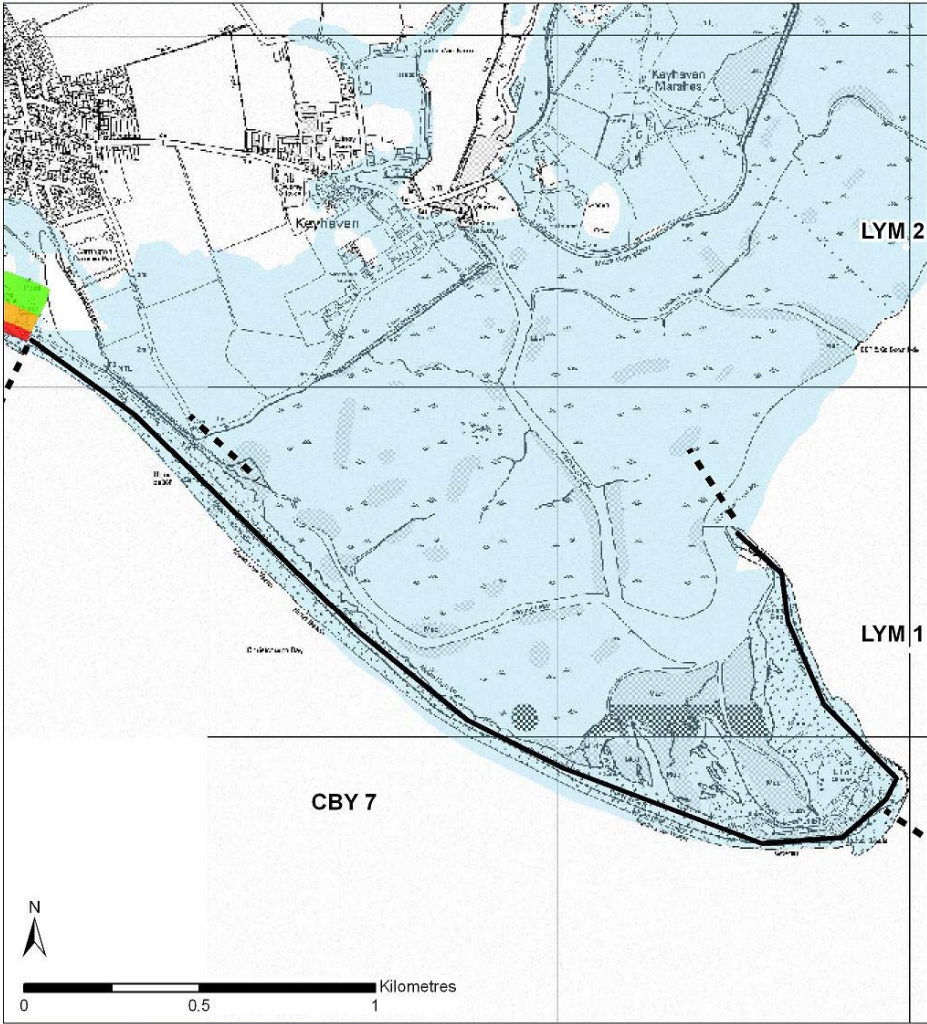
# No Active Intervention (NAI) policy scenario

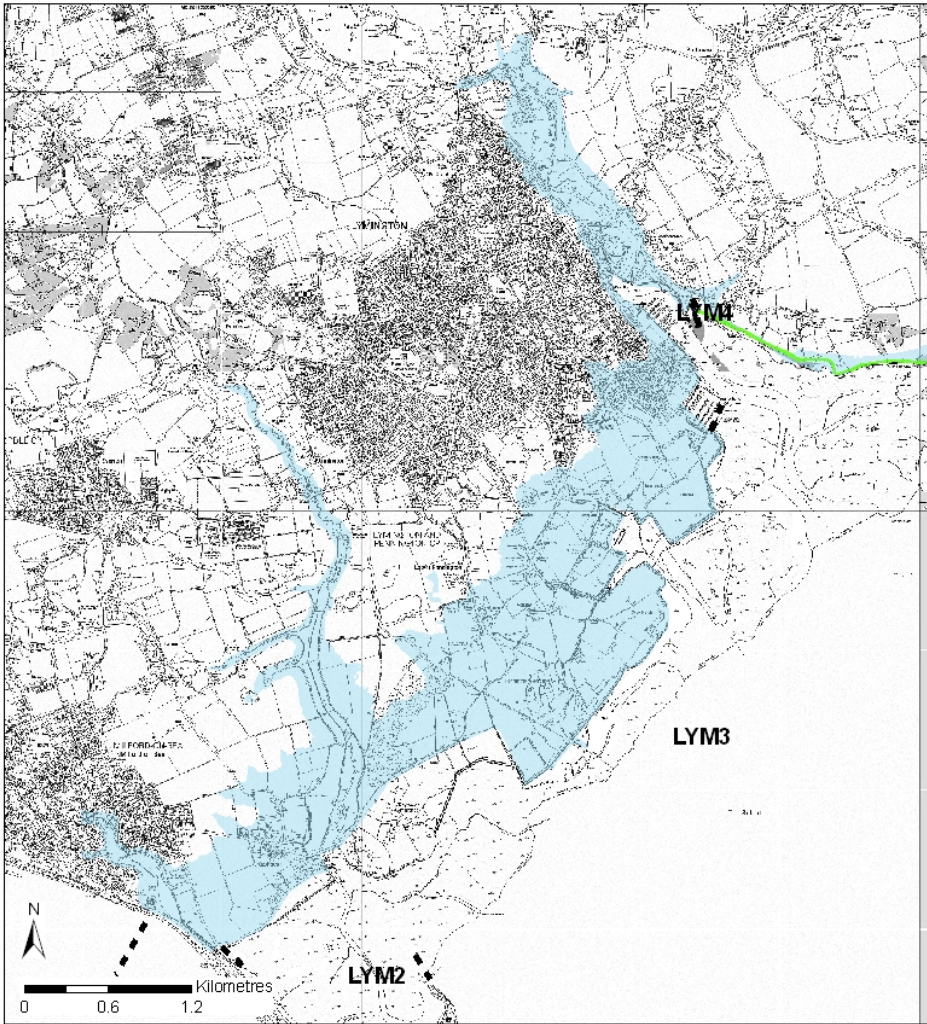
There is no expenditure on maintaining or improving existing coastal and flood defences

Defences will fail at a time dependent upon their residual life and condition, or natural defences (e.g. saltmarshes) have been eroded and no longer provide protection to the mainland from wave attack









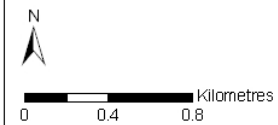
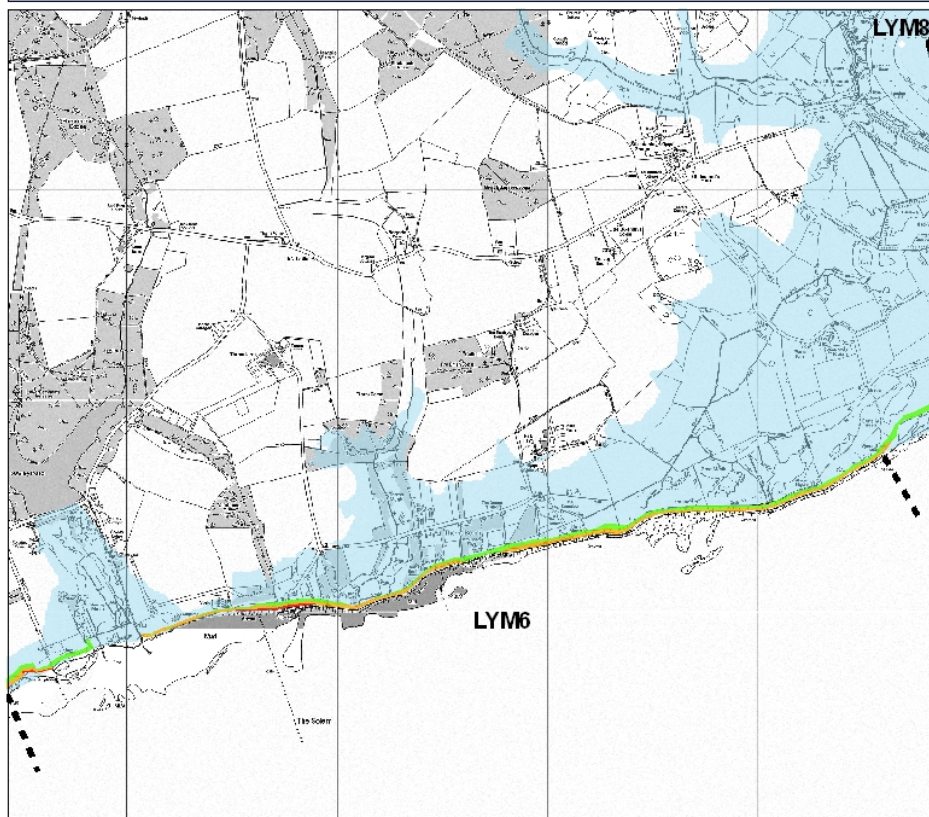
This map is reproduced from Ordnance Survey material with the permission of Ordnance Survey on behalf of the Controller of Her Majesty's Stationery Office © Crown copyright. Unauthorised reproduction infringes Crown copyright and may lead to prosecution or civil proceedings.  
New Forest District Council licence no. 100026220 2004

- Policy Unit Boundary
- Complex coastal processes
- Indicative erosion zone up to 2025
- Indicative erosion zone up to 2055
- Indicative erosion zone up to 2105
- 2115 Indicative Floodplain © Environment Agency





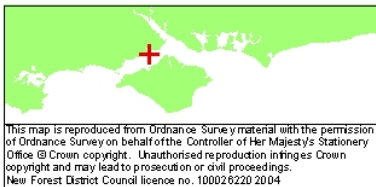
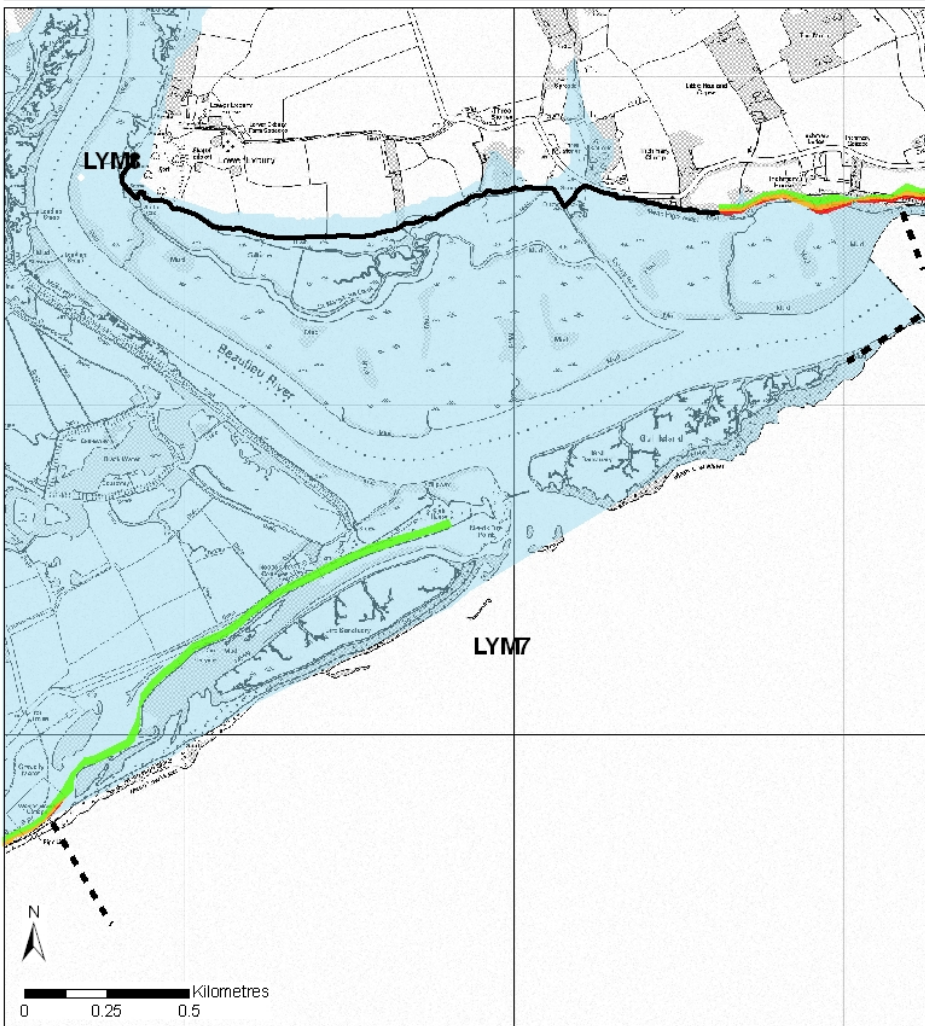
- Policy Unit Boundary
- Complex coastal processes
- Indicative erosion zone up to 2025
- Indicative erosion zone up to 2055
- Indicative erosion zone up to 2105
- 2115 Indicative Floodplain © Environment Agency



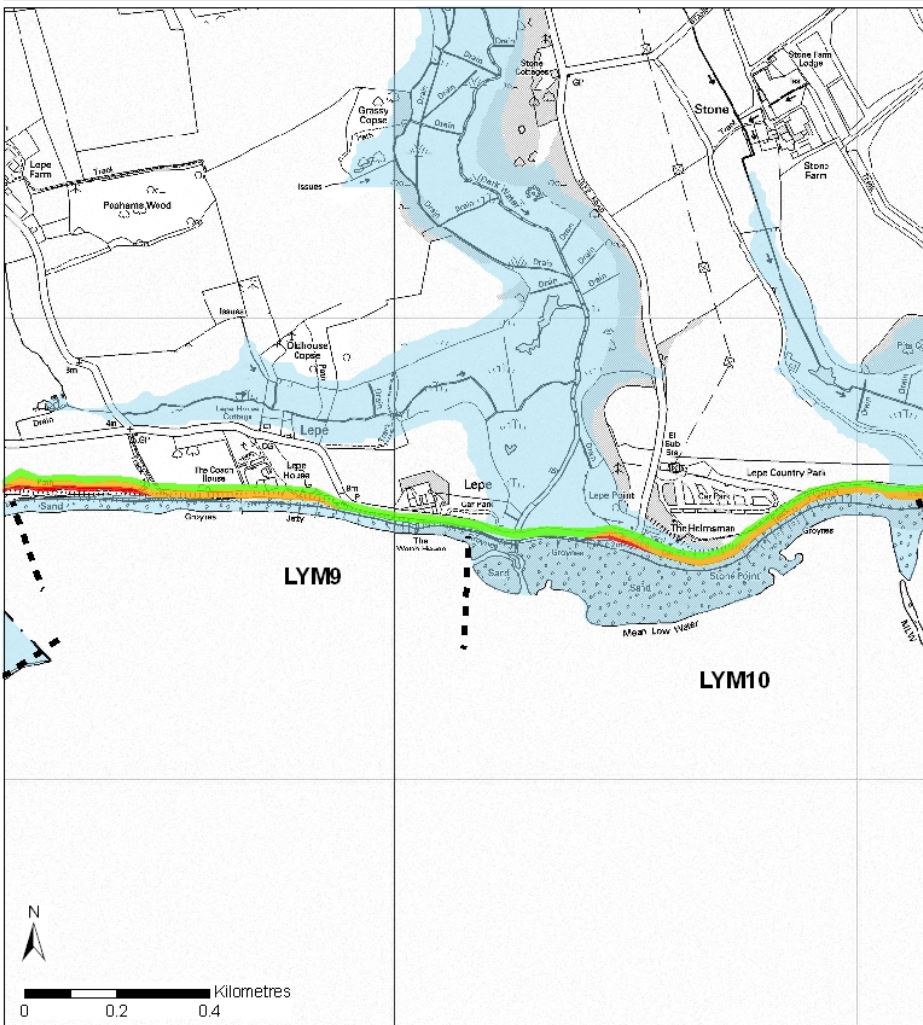
This map is reproduced from Ordnance Survey material with the permission of Ordnance Survey on behalf of the Controller of Her Majesty's Stationery Office. © Crown copyright. Unauthorised reproduction infringes Crown copyright and may lead to prosecution or civil proceedings.  
New Forest District Council licence no. 100026220 2004

- Policy Unit Boundary
- Complex coastal processes
- Red Indicative erosion zone up to 2025
- Orange Indicative erosion zone up to 2055
- Green Indicative erosion zone up to 2105
- Blue 2115 Indicative Floodplain © Environment Agency





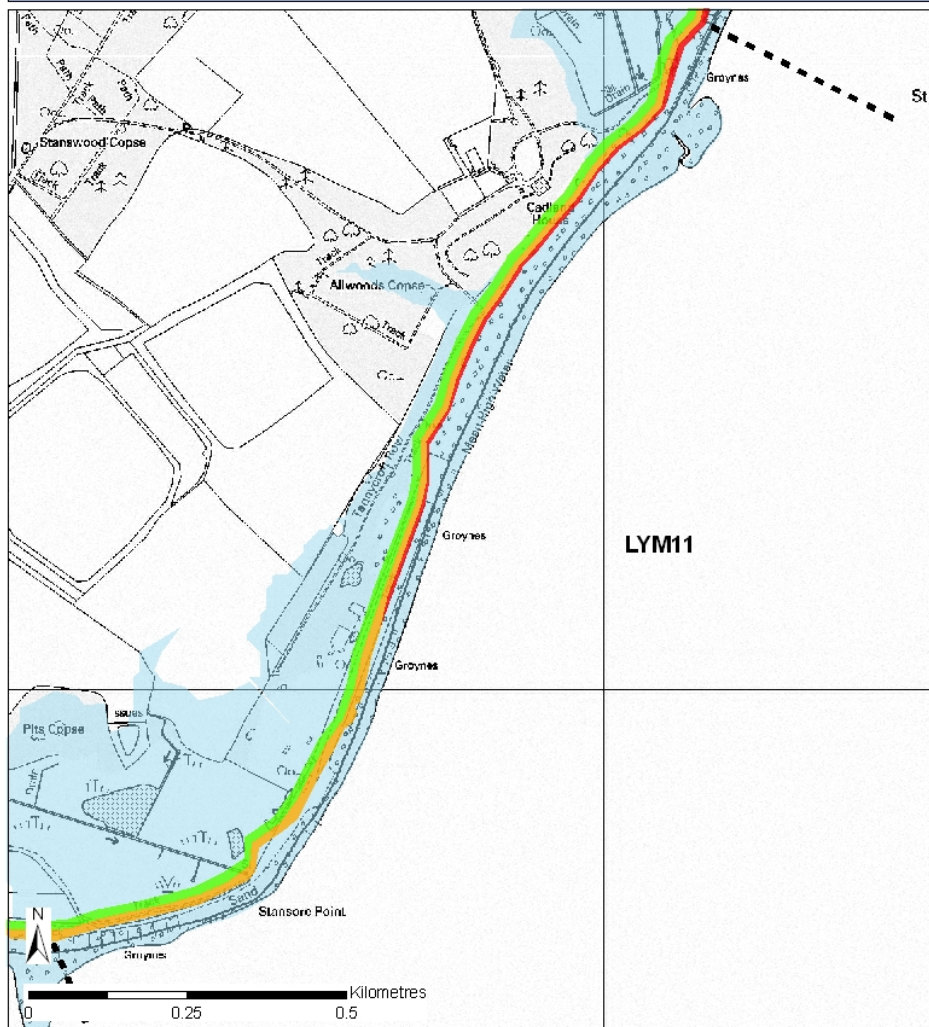
- Policy Unit Boundary
- Complex coastal processes
- Indicative erosion zone up to 2025
- Indicative erosion zone up to 2055
- Indicative erosion zone up to 2105
- 2115 Indicative Floodplain © Environment Agency



This map is reproduced from Ordnance Survey material with the permission of Ordnance Survey on behalf of the Controller of Her Majesty's Stationery Office. © Crown copyright. Unauthorised reproduction in any form is prohibited and may lead to prosecution or civil proceedings. New Forest District Council licence no. 100026220 2004

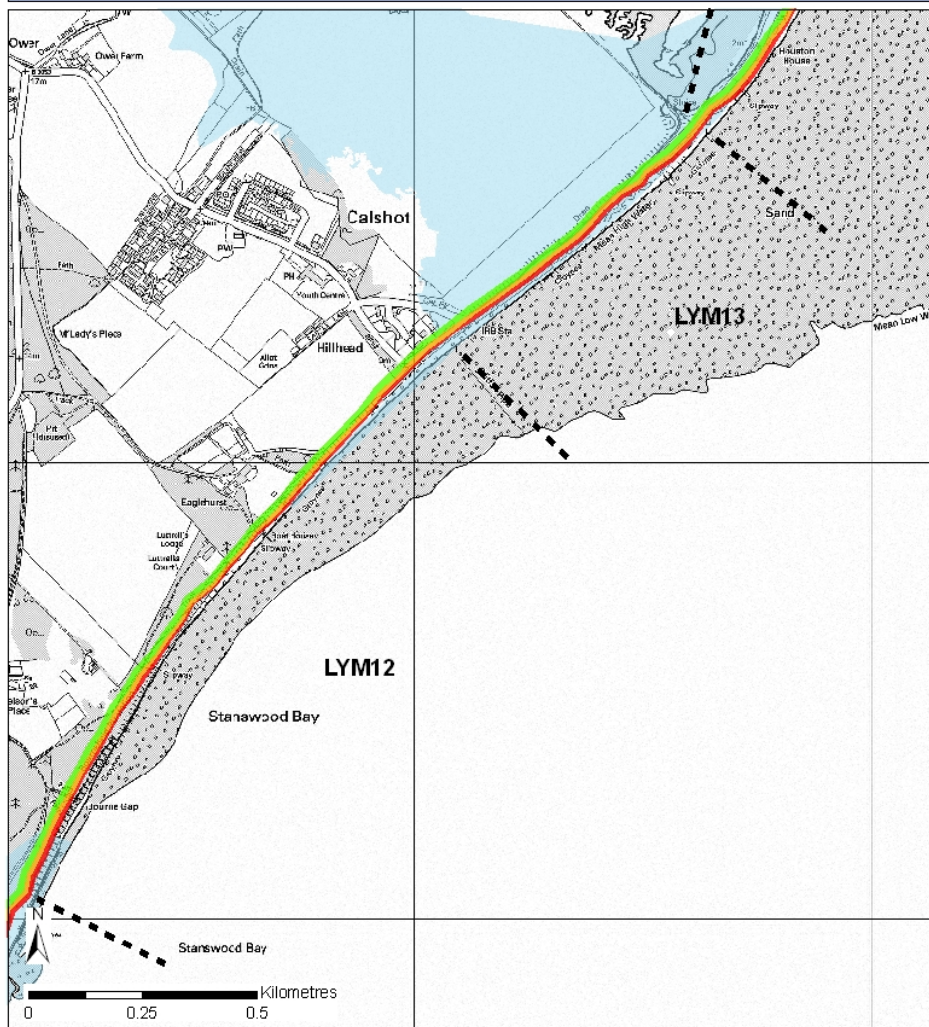
- Policy Unit Boundary
- Complex coastal processes
- Red Indicative erosion zone up to 2025
- Orange Indicative erosion zone up to 2055
- Green Indicative erosion zone up to 2105
- Blue 2115 Indicative Floodplain © Environment Agency





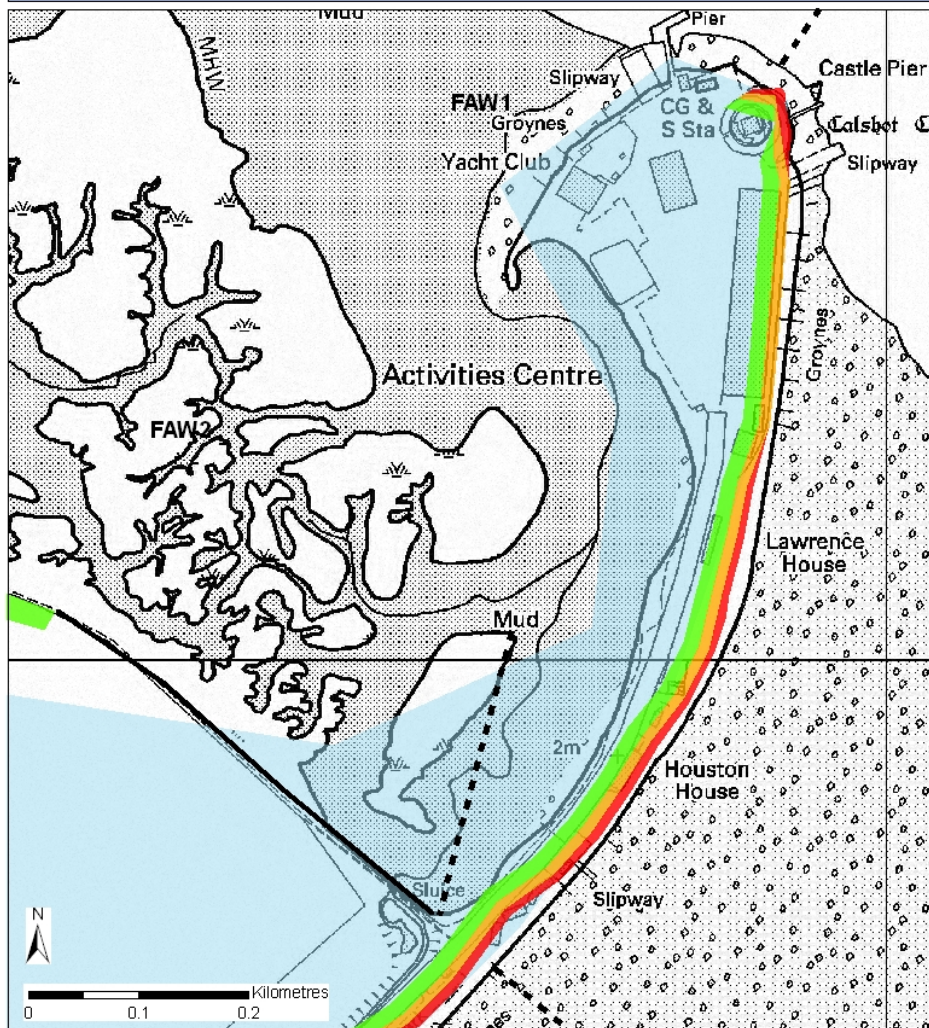
This map is reproduced from Ordnance Survey material with the permission of Ordnance Survey on behalf of the Controller of Her Majesty's Stationery Office. © Crown copyright. Unauthorised reproduction in any form is prohibited and may lead to prosecution or civil proceedings. New Forest District Council licence no. 100026220 2004

- Policy Unit Boundary
- Complex Coastal Processes
- Red Indicative erosion zone up to 2025
- Orange Indicative erosion zone up to 2055
- Green Indicative erosion zone up to 2105
- Light Blue 2115 Indicative Floodplain © Environment Agency



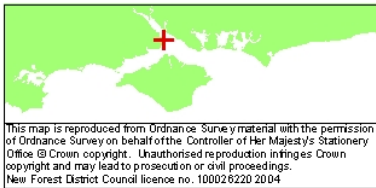
- Policy Unit Boundary
- Complex coastal processes
- Red Indicative erosion zone up to 2025
- Orange Indicative erosion zone up to 2055
- Green Indicative erosion zone up to 2105
- Blue 2115 Indicative Floodplain © Environment Agency





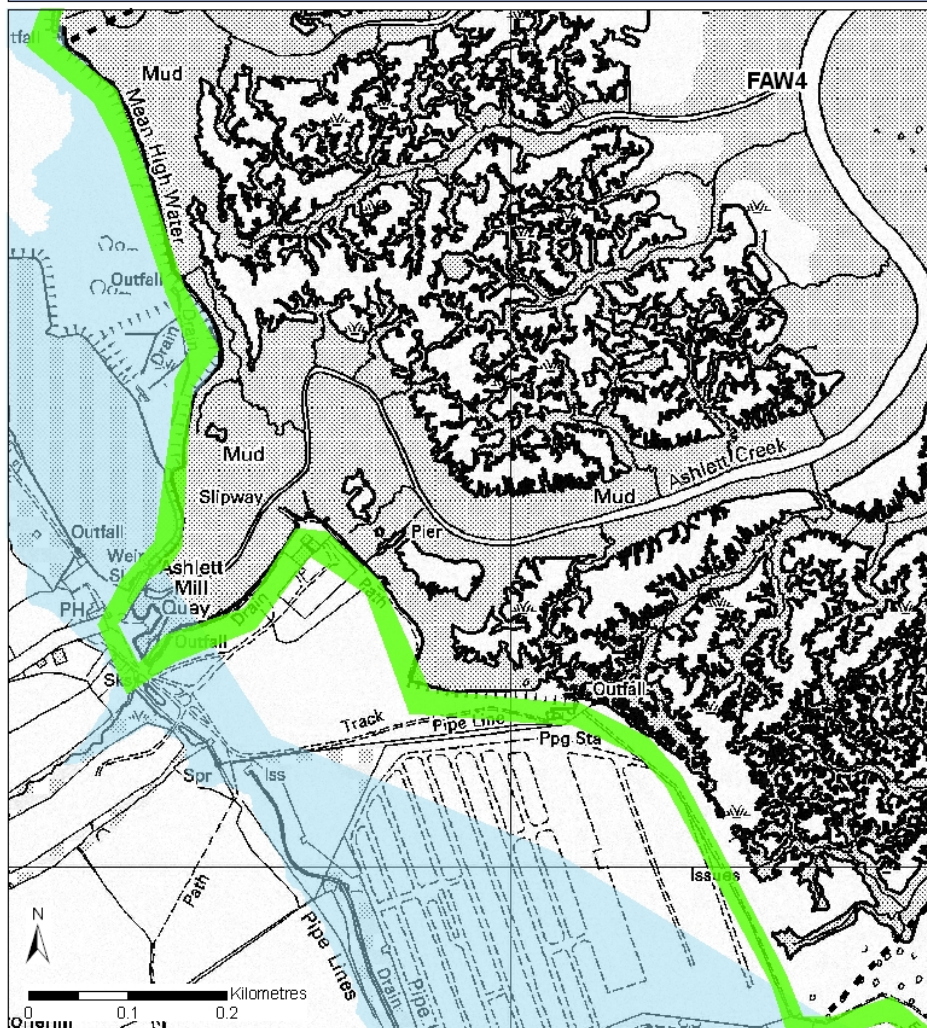
This map is reproduced from Ordnance Survey material with the permission of Ordnance Survey on behalf of the Controller of Her Majesty's Stationery Office © Crown copyright. Unauthorised reproduction in any form is prohibited and may lead to prosecution or civil proceedings. New Forest District Council licence no. 100026220 2004

- Policy Unit Boundary
- Complex coastal processes
- Red Indicative erosion zone up to 2025
- Orange Indicative erosion zone up to 2055
- Green Indicative erosion zone up to 2105
- Blue 2115 Indicative Floodplain © Environment Agency



■ ■ ■ Policy Unit Boundary  
 — Complex coastal processes  
 ■ Indicative erosion zone up to 2025  
 ■ Indicative erosion zone up to 2055  
 ■ Indicative erosion zone up to 2105  
 ■ 2115 Indicative Floodplain © Environment Agency

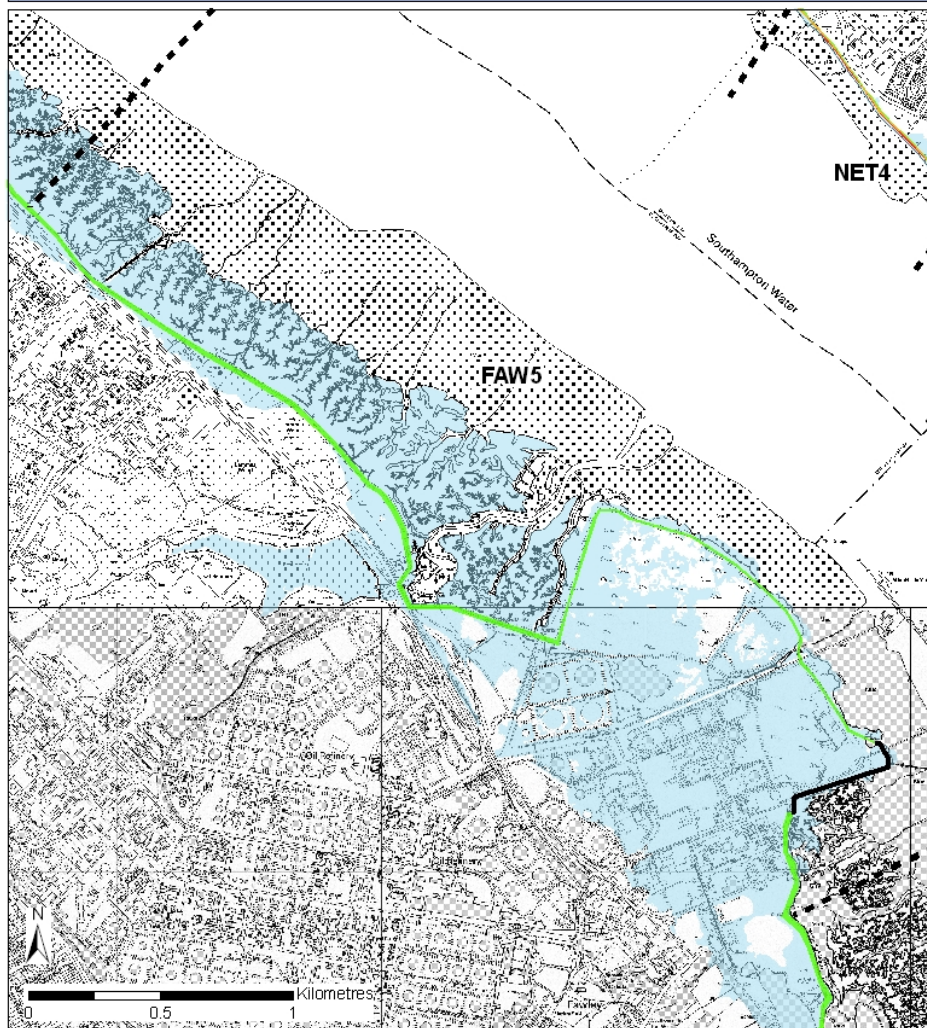




This map is reproduced from Ordnance Survey material with the permission of Ordnance Survey on behalf of the Controller of Her Majesty's Stationery Office © Crown copyright. Unauthorised reproduction in any form is prohibited and may lead to prosecution or civil proceedings. New Forest District Council licence no. 100026220 2004

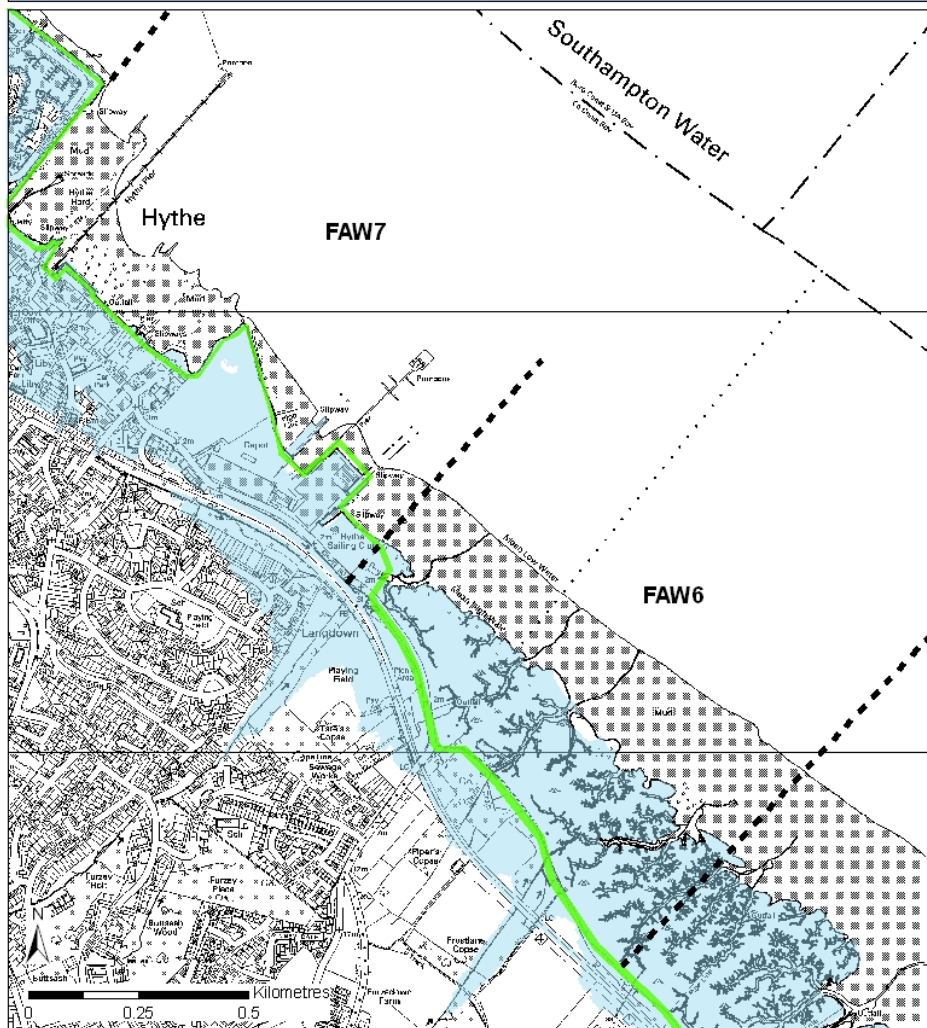
- Policy Unit Boundary
- Complex coastal processes
- Red Indicative erosion zone up to 2025
- Orange Indicative erosion zone up to 2055
- Green Indicative erosion zone up to 2105
- Light Blue 2115 Indicative Floodplain © Environment Agency





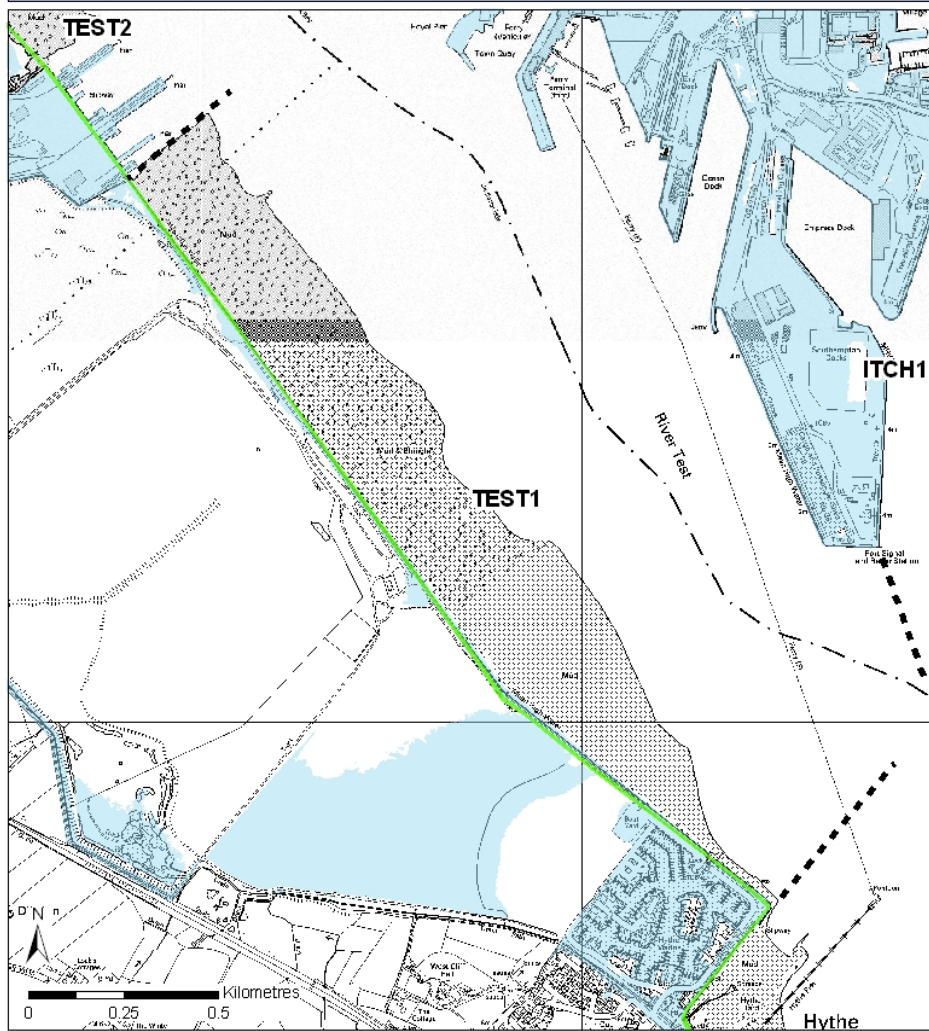
This map is reproduced from Ordnance Survey material with the permission of Ordnance Survey on behalf of the Controller of Her Majesty's Stationery Office © Crown copyright. Unauthorised reproduction in any form is prohibited and may lead to prosecution or civil proceedings.  
New Forest District Council licence no. 100026220 2004

- Policy Unit Boundary
- Complex coastal processes
- Red Indicative erosion zone up to 2025
- Orange Indicative erosion zone up to 2055
- Green Indicative erosion zone up to 2105
- Light Blue 2115 Indicative Floodplain © Environment Agency



This map is reproduced from Ordnance Survey material with the permission of Ordnance Survey on behalf of the Controller of Her Majesty's Stationery Office © Crown copyright. Unauthorised reproduction infringes Crown copyright and may lead to prosecution or civil proceedings.  
New Forest District Council licence no. 100026220 2004

- Policy Unit Boundary
- Complex coastal processes
- Red Indicative erosion zone up to 2025
- Orange Indicative erosion zone up to 2055
- Green Indicative erosion zone up to 2105
- Blue 2115 Indicative Floodplain © Environment Agency



This map is reproduced from Ordnance Survey material with the permission of Ordnance Survey on behalf of the Controller of Her Majesty's Stationery Office. © Crown copyright. Unauthorised reproduction infringes Crown copyright and may lead to prosecution or civil proceedings.  
New Forest District Council licence no. 100026220 2004

- Policy Unit Boundary
- Complex coastal processes
- Indicative erosion zone up to 2025
- Indicative erosion zone up to 2055
- Indicative erosion zone up to 2105
- 2115 Indicative Floodplain © Environment Agency



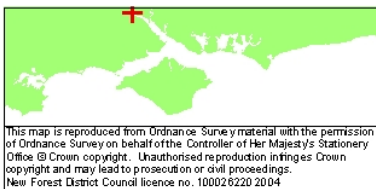
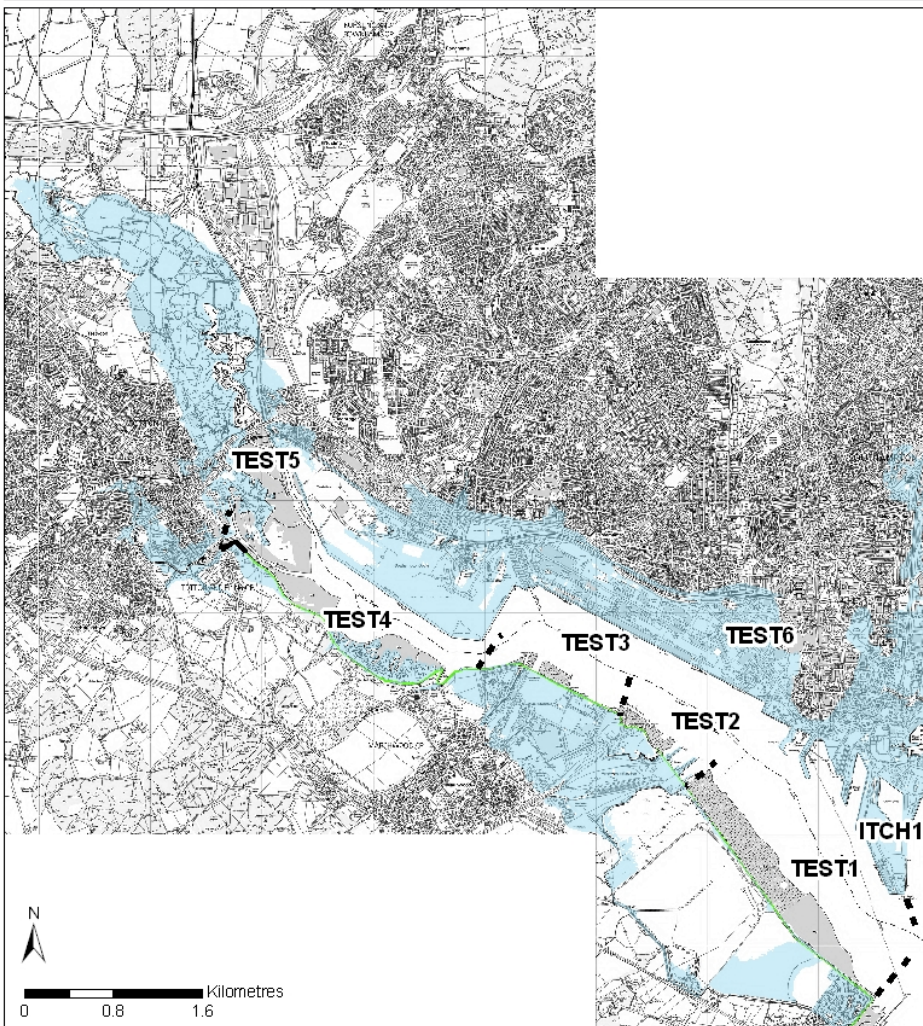


■ ■ ■ Policy Unit Boundary  
 — Complex coastal processes  
 ■ Indicative erosion zone up to 2025  
 ■ Indicative erosion zone up to 2055  
 ■ Indicative erosion zone up to 2105  
 ■ 2115 Indicative Floodplain © Environment Agency



■ ■ ■ Policy Unit Boundary  
 — Complex coastal processes  
 ■ Indicative erosion zone up to 2025  
 ■ Indicative erosion zone up to 2055  
 ■ Indicative erosion zone up to 2105  
 ■ 2115 Indicative Floodplain © Environment Agency





This map is reproduced from Ordnance Survey material with the permission of Ordnance Survey on behalf of the Controller of Her Majesty's Stationery Office. © Crown copyright. Unauthorised reproduction in any form is prohibited and may lead to prosecution or civil proceedings.  
New Forest District Council licence no. 100026220 2004

- Policy Unit Boundary
- Complex coastal processes
- Indicative erosion zone up to 2025
- Indicative erosion zone up to 2055
- Indicative erosion zone up to 2105
- 2108 Indicative Floodplain © Environment Agency