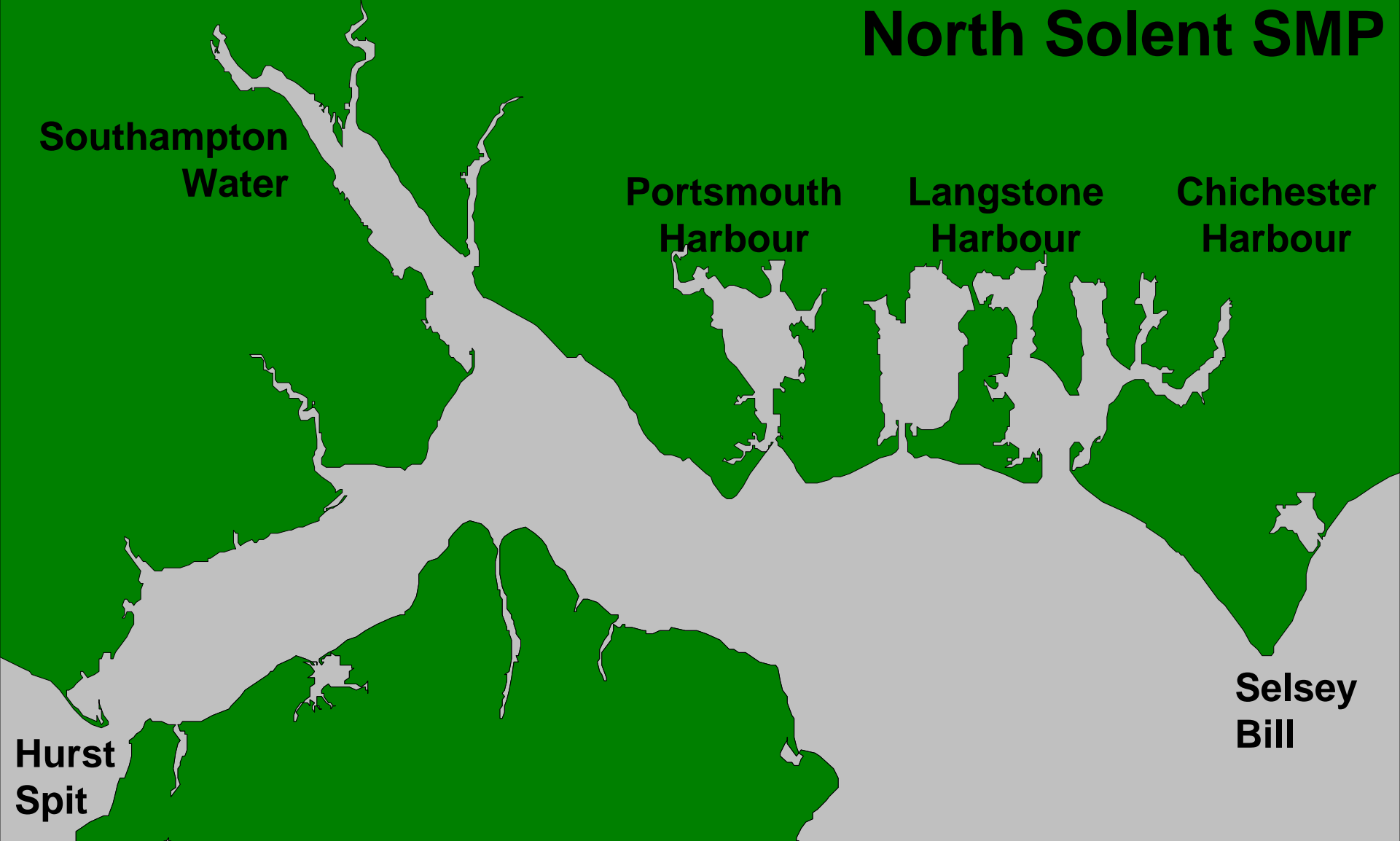


North Solent SMP



Elected Member Group Meeting No. 6

Thursday 9 July 2009

Agenda

1. Introduction & Apologies
2. Minutes from EMG 08/05/09
3. EMG Actions Log update
4. How have the Draft Proposed Policies been determined?
5. Appropriate Assessment
6. Private defences
7. Coastal Erosion Risk Mapping – Briefing Paper & FAQs
8. Public Consultation
9. SMP programme
10. Any Other Business
11. Date of next EMG meeting

1. Introductions

Apologies

Cllr Tony Swain NFDC
Cllr Fran Carpenter NFDC
Cllr Amy Willacy SCC
Cllr Eleanor Scott PCC
Cllr Lynne Stagg PCC
Cllr Paul Buckley HBC
Cllr Pieter Montyn WSCC
Clive Chatters NFNPA

2. Minutes from EMG 08/05/09



3. Actions arising from CSG 08/05/09

Action No	Action Description	Responsibility	Comment
1	add the issue of whether habitat compensation requirements arising from improvements to private defences are to be delivered through the Habitat Creation Programme, and the provision of clear guidance as an agenda item to next EMG meeting	AC	completed
2	prepare a draft supporting paper addressing implications of Erosion Risk Maps and to circulate to CSG and EMG for comments	AC	completed
3	provide the SMP team and CL with comments on the AA method	CC	completed
4	ensure AA method is legally robust, acceptable to all CSG member organisations and is approved by NE and EA	AC	Amended method awaiting EA and NE approval
5	circulate National Review Group advice	AC	completed
6	liaise with each CSG member organisation to go through Appendices F and G assessment tables	AC	completed
7	circulate link for Draft Floods and Water Management Bill to CSG for consultation and comments	AC	completed
8	propose suitable dates for the EMG and CSG	AC	completed



4. How have the Draft Proposed Policies been determined?

- Non-statutory Framework policy documents
- Strategic planning and management policy for 0-20, 20-50 and 50-100 year epochs
- Coastal erosion and flood risk management
- Coastal protection & flood defence engineering policy
- Economic appraisal
- Environmental assessments
- Communication and Consultation

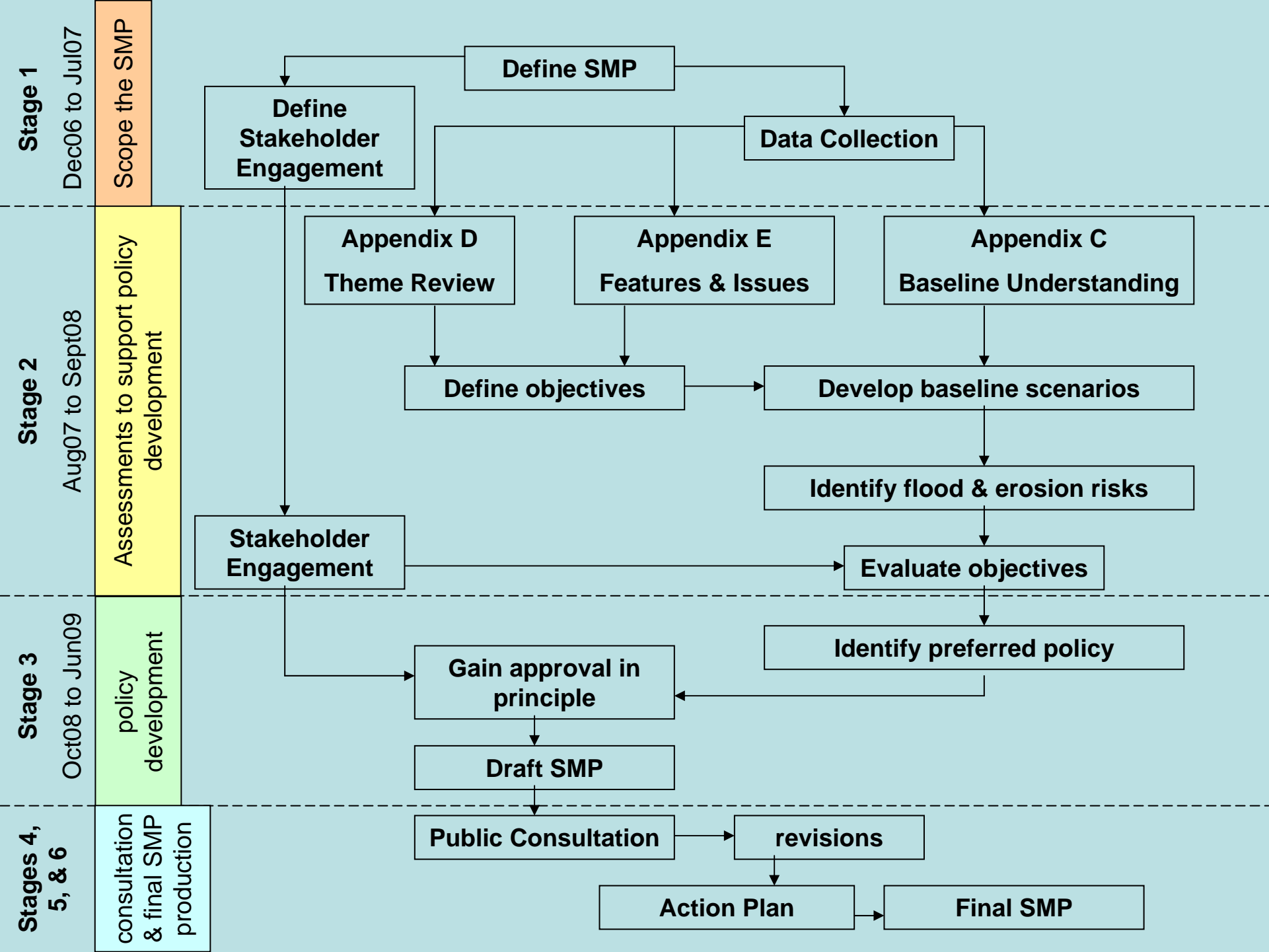


Shoreline management policies

- Hold The Line
- No Active Intervention
- Advance The Line
- Managed Realignment



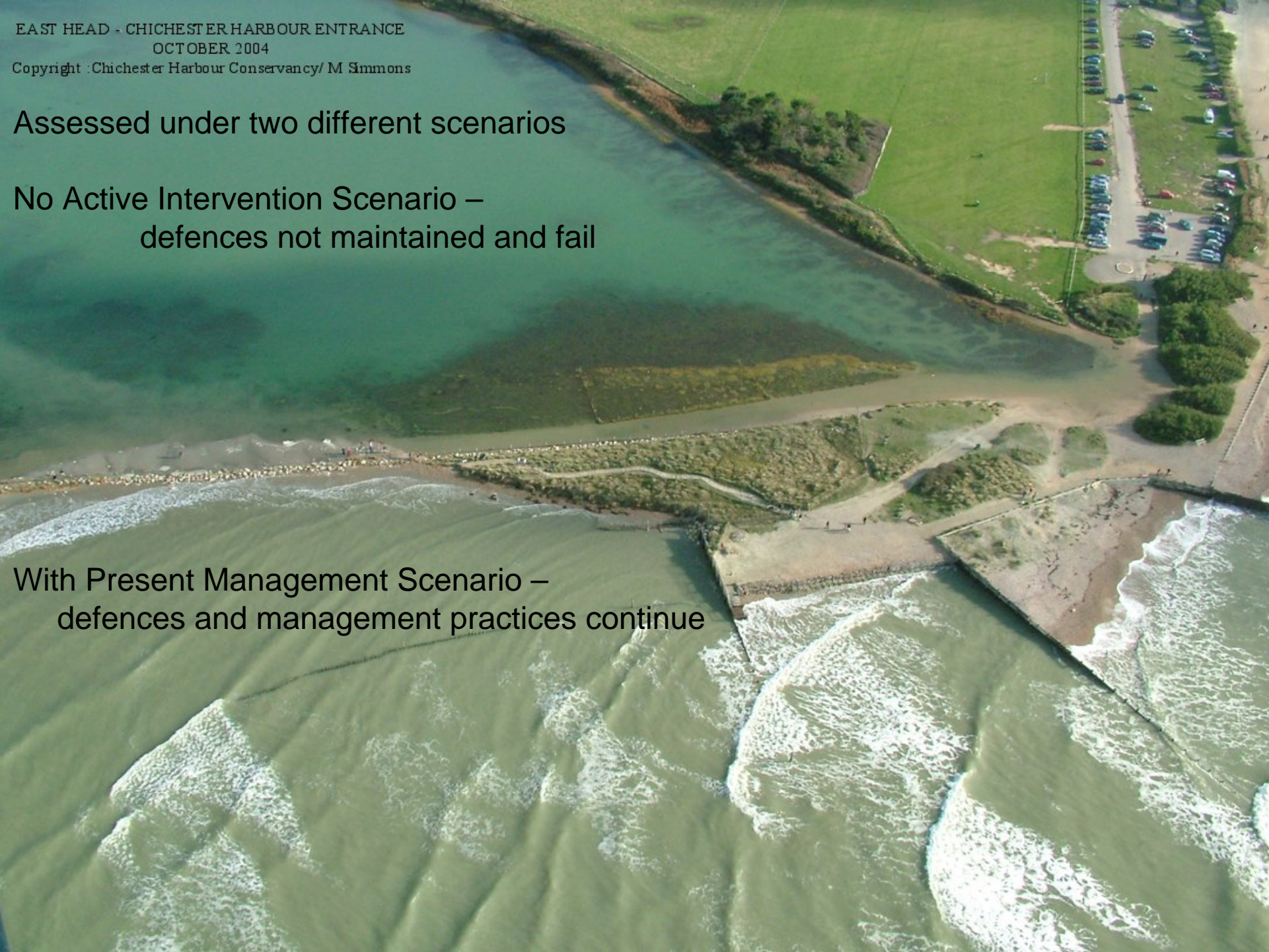
Thornham Point, Chichester Harbour, 1998
© Chichester Harbour Conservancy



Determining the Baseline

- Coastal Processes (sediment transport, geology, waves and tides, shoreline evolution)
- Defence Assessment (type, condition, residual life, stand of protection)
- Flood Risk Mapping
- Coastal Erosion Risk Mapping



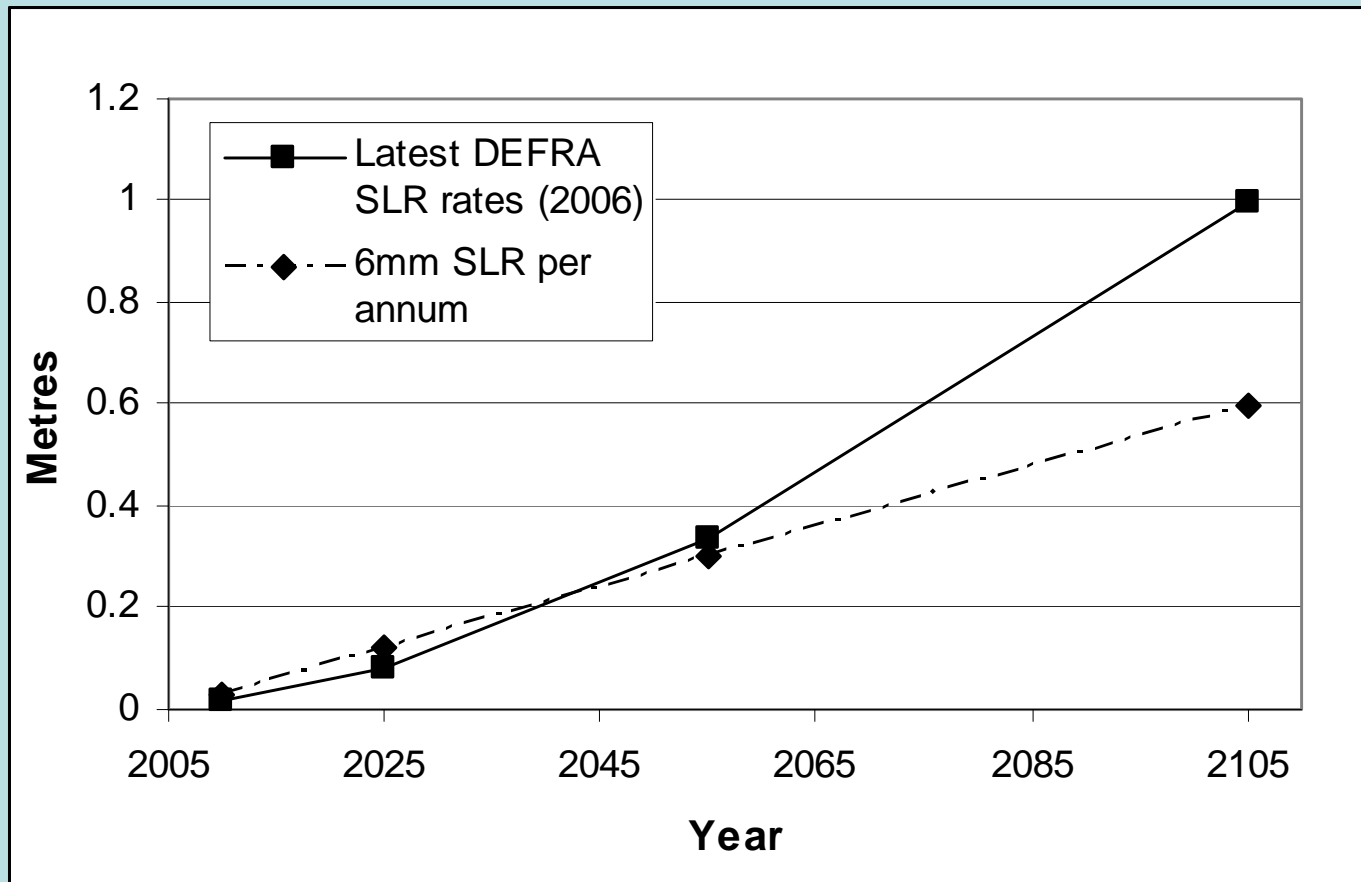


Assessed under two different scenarios

No Active Intervention Scenario –
defences not maintained and fail

With Present Management Scenario –
defences and management practices continue

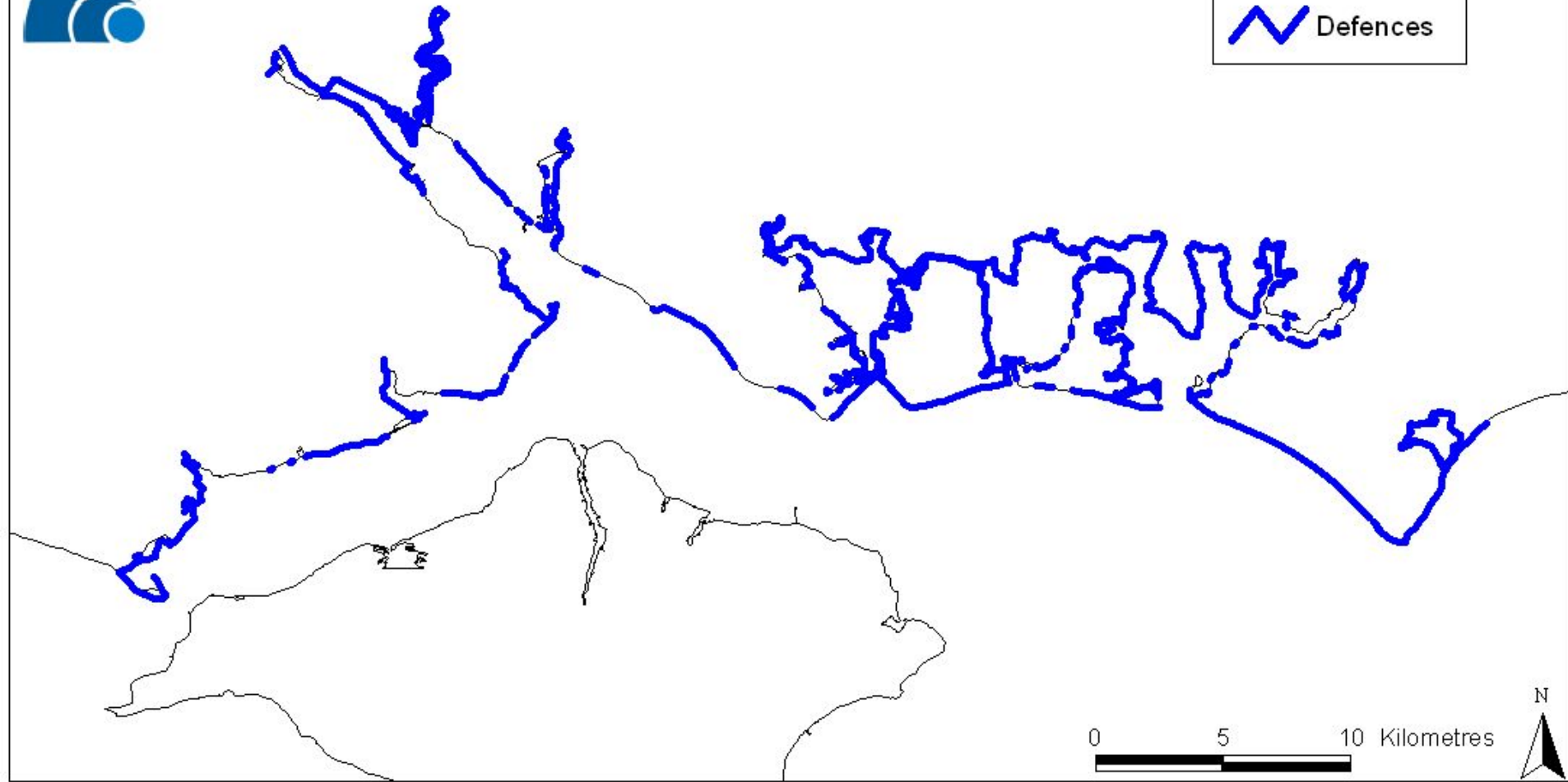
Administrative Region	Vertical Land Movement (mm/yr)	Net Sea Level Rise (mm/yr)				Previous allowances
		1990-2025	2025-2055	2055-2085	2085-2115	
Eastern England, East Midlands, London, South East England	-0.8	4.0	8.5	12.0	15.0	6mm/yr
South West and Wales	-0.5	3.5	8.0	11.5	14.5	5mm/yr
North West and North East England, Scotland	+0.8	2.5	7.0	10.0	13.0	4mm/yr





Condition Assessment of Defence Assets





80% of SMP shoreline is defended or has active beach management

60% of defences are owned and maintained by private third parties

10% of defences are owned and maintained by MOD