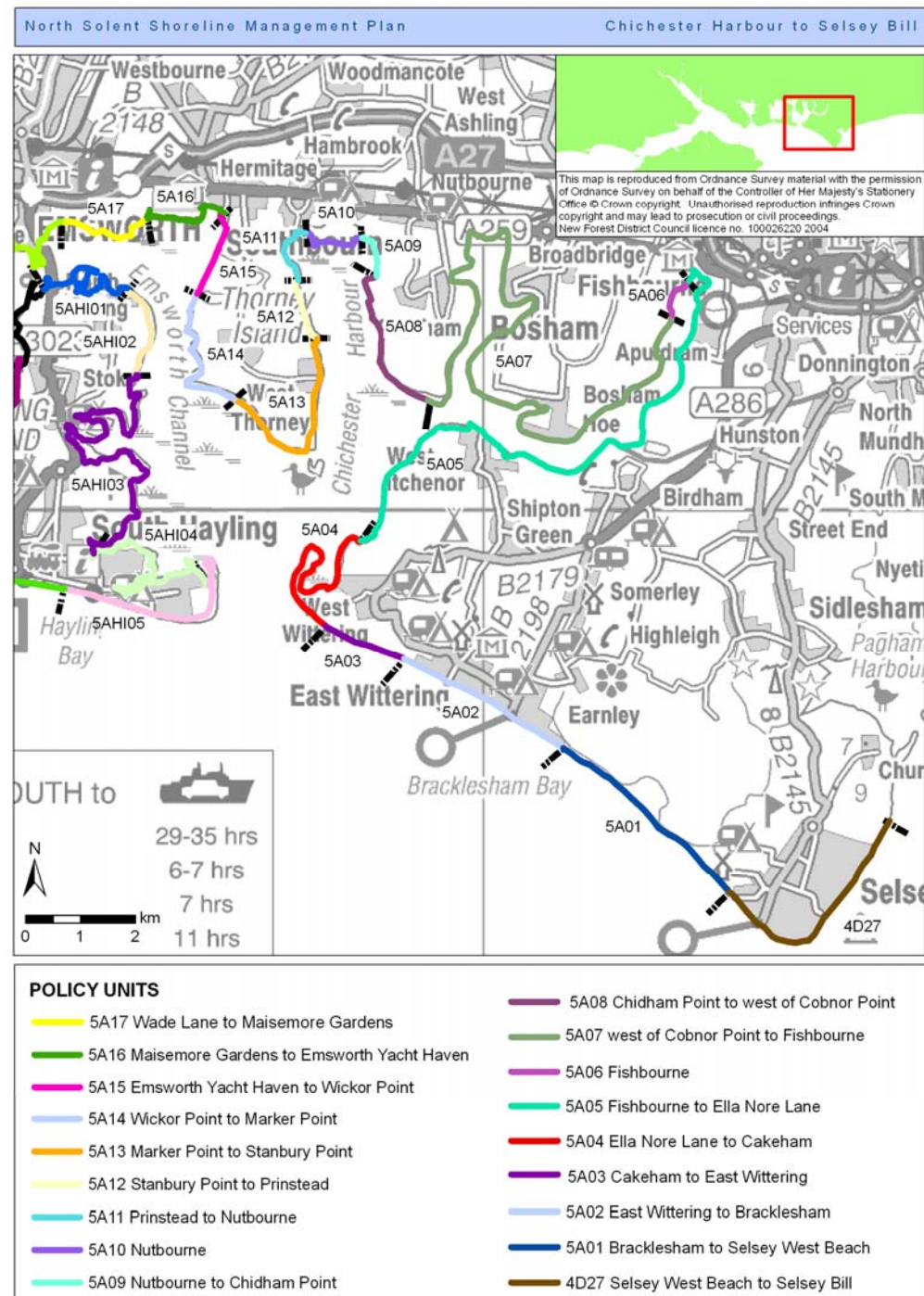


Policy Units

Determine Policy Units based on data, information and assessments up to this stage

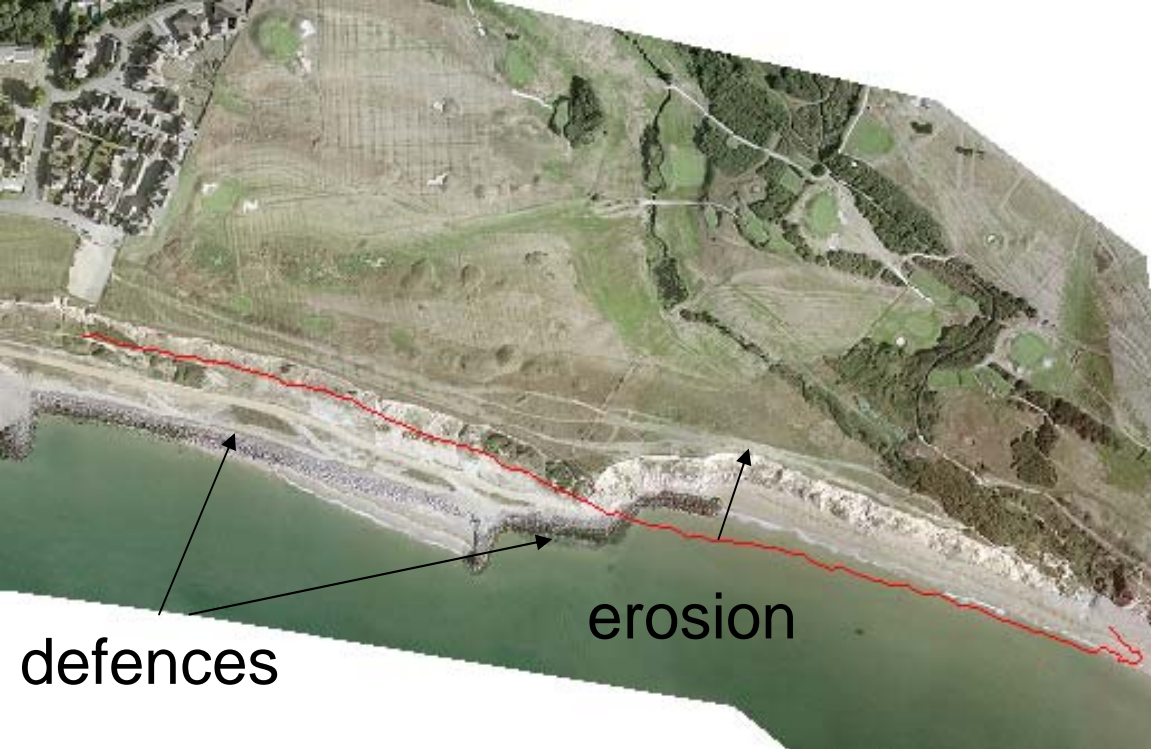
Need to determine an SMP policy for each of the time periods (0-20 yrs; 20-50yrs; 50-100yrs) for each Policy Units

The North Solent SMP has 64 Policy Units



Different combinations of policies per Policy Unit are then appraised, to assess the implications on coastal processes and future defence requirements





e.g. will defending one location cause erosion or increase flood risk along the coast?

What is the maintenance life of a defence before an expensive rebuild is required?
Will it still be technically possible?
Would it be more effective if realigned?



How the policies may develop

Now	Objective-led policies	Majority of these objective-led proposed policies are on private land or MOD land. SMP policies cannot be imposed on these landowners without their consent
July	Economic Appraisal	Economic viability of objective-led policies
Aug – Sep	Confirmation of proposed policies	Put proposed policies forward to public consultation
Sep – Nov	Public consultation	Review and revise policies in response to consultations responses and objections
Dec	Final Preferred policies	Some may be different to initially proposed policies

Questions?

5. Appropriate Assessment (AA)



80% of the North Solent SMP area is covered by one or more European nature conservation designations

Under the Habitats and Birds Directives, and through the Habitat Regulations, SMPs are required to undertake an appropriate assessment to determine whether the SMP:
is likely to have a significant effect on a European site;
will not have an adverse effect on the integrity of the European designated sites.

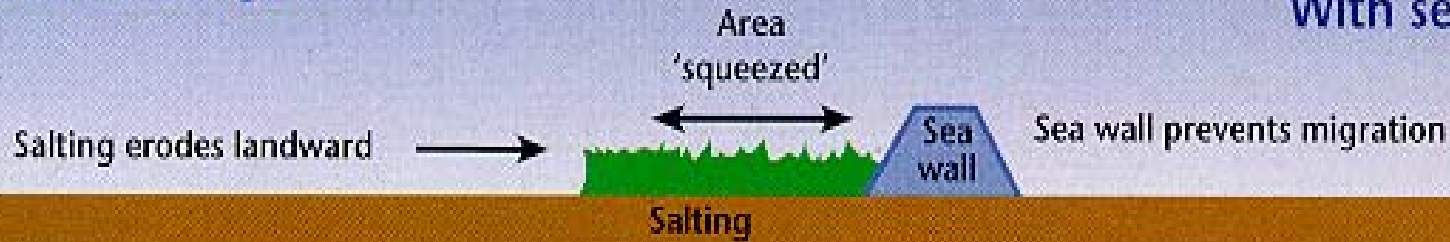
We have worked closely with EA and NE to develop a methodology, to assess the impact of the SMP policies on these wildlife sites. Tables have been modified and expanded to clarify what qualifying SAC, SPA and Ramsar features will be assessed

When the amendments to the method have been formally approved by both NE & EA it will be made available on the North Solent website



Coastal "Squeeze"

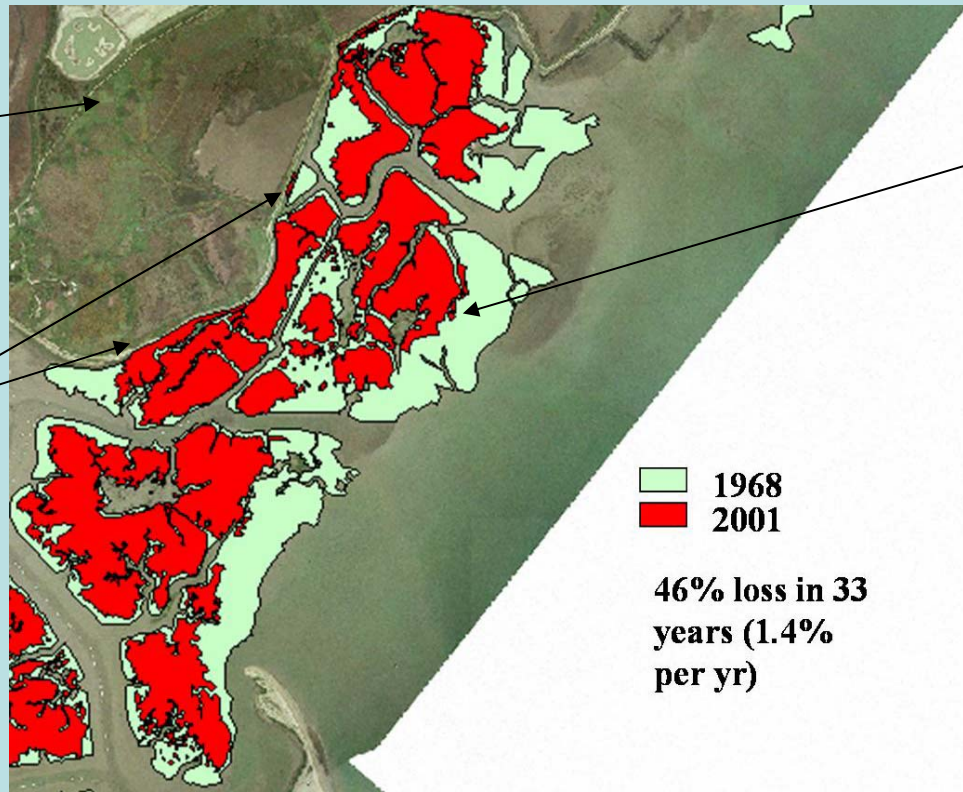
With seawall



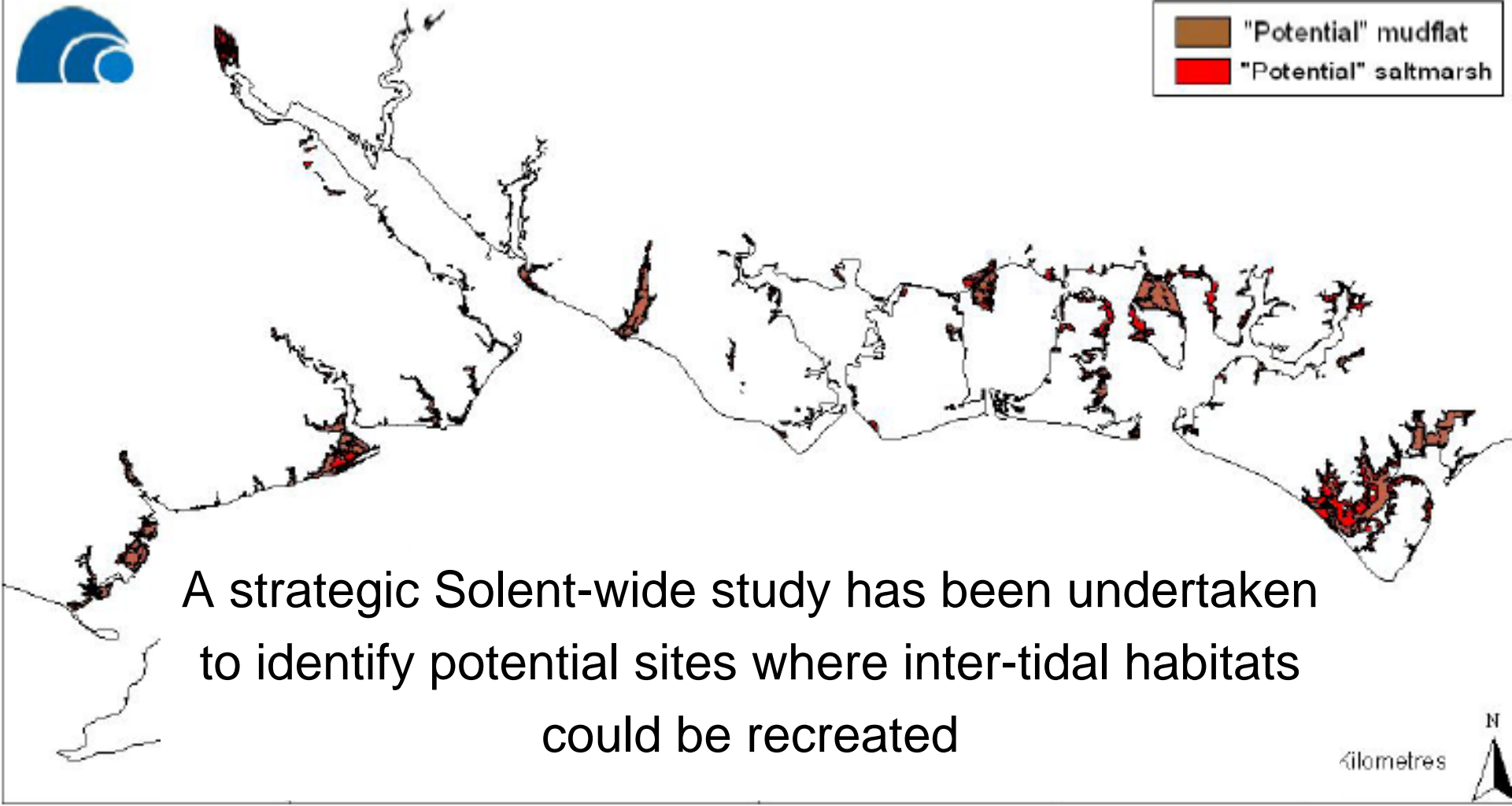
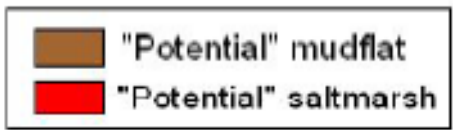
Without seawall



coastal grazing marsh is protected behind the defences

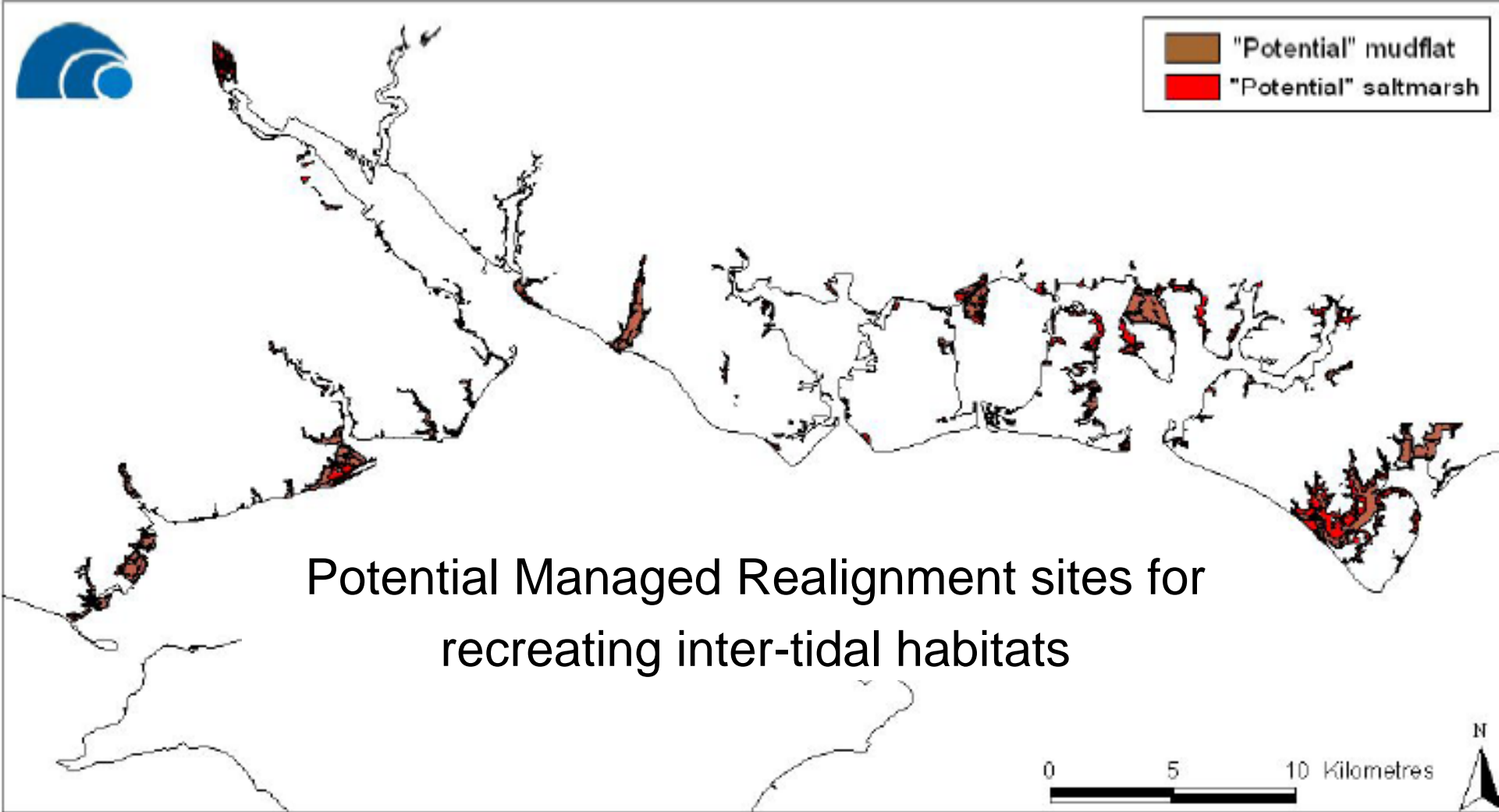
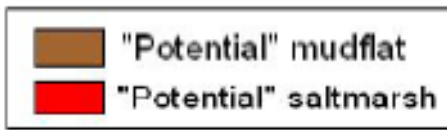


Inter-tidal habitats are unable to migrate landwards due to fixed defences



A strategic Solent-wide study has been undertaken to identify potential sites where inter-tidal habitats could be recreated

- Limited inter-tidal habitat creation opportunities within the Solent
- Majority are on privately owned land and/or behind privately maintained defences
- Many are already covered by nature conservation designations



Potential Managed Realignment sites for recreating inter-tidal habitats

- Many of the areas to be realigned over contain transitional freshwater habitats (e.g. coastal grazing marsh) and/or are part of a network of high tide roost sites
- Coastal grazing marsh considered to be recreatable but takes 50 years
- Compensation habitats will be delivered through the EA's Habitat Creation Programme

6. Private defences & EA's Habitat Creation Programme (HCP)

See Hand out – in general terms:-

The HCP aims to provide strategic delivery of compensation habitats identified through the AAs for all flood and coastal risk plans/projects. In addition to offsetting EA and LA requirements, it will also deliver compensation habitat caused by continued maintenance of third party defences.

If a third party proposed improvements to their defences they would require planning permission and other consents, as is currently the case, plus an AA if affecting European habitats.

If improvements were deemed to not cause an increase in habitat loss then coastal squeeze would be compensated for as per maintenance offset.

Third parties would be responsible for compensation habitat for any increased coastal squeeze due to lateral extension of existing or addition/new defences (e.g. increased footprint)

Each proposal will be considered on case-by-case basis

7. Coastal Erosion Risk Mapping – Briefing Paper & FAQs

See Hand out

The various SMP reports, the flood and erosion risk mapping and the FAQs will be made accessible to the public via the website

8. Public Consultation

CSG will be approaching private landowners where the SMP is proposing MR on privately owned land/behind privately maintained defences in advance of public consultation

Aims of Public Consultation

- to inform and raise awareness of the Draft SMP and preferred policies, the Strategic Environmental Assessment and the Appropriate Assessment to stakeholders, landowners and the general public
- to provide opportunities for support and objection of policies and assessments
- to record comments received and method of consideration and revisions

12 week public consultation period will take place from September to November. Note the dates not yet confirmed

Appendix B Stakeholder Engagement Consultation Report

Details and arrangements for exhibitions and advertisements in progress

9. SMP Policy Development Programme

Policy Unit boundaries & Draft proposed policy scenarios confirmed June 09

Economic Appraisal – July 09

Approval in Principle being sought – June to Sept 09

Public consultation preparations June and July, materials produced August 09

Appropriate Assessment June to Sept 09

Water Framework Directive Assessment June and July 09

Strategic Environmental Assessment June to Sept 09

Public Consultation on Draft SMP - Sept to Nov 09

Submit Draft SMP, WFD, SEA and AA to NRG Sep/Oct 09

Preparation of Action Plan by Dec 09

Revisions from NRG and Public Consultation – Oct to Dec 09

Consultation Report completed Jan 10

Adoption of Final SMP by Las Jan/Feb 10

submit Final SMP, appendices and Action Plan March 10

10. Any Other Business

11. Date of next meeting

Possibly Week 31st Aug to 4th Sept?

EMG date will be proposed once landowner consultation events have been confirmed – will be in advance of public consultation

North Solent SMP website


[Home](#) | [Contact the Council](#) | [Help](#) | [New Forest Tourism](#) | [Towns and Parishes](#)

 Search

[Services](#) | [A](#) | [B](#) | [C](#) | [D](#) | [E](#) | [F](#) | [G](#) | [H](#) | [I](#) | [J](#) | [K](#) | [L](#) | [M](#) | [N](#) | [O](#) | [P](#) | [R](#) | [S](#) | [T](#) | [V](#) | [W](#) | [Y](#)
[North Solent SMP](#)
[Administration](#)
[Geographical Areas](#)
[Nature Conservation](#)
[Stakeholder Engagement](#)
[Supporting Projects](#)
[Environmental Assessments](#)
[Key Stakeholder Group](#)
[SMP Supporting Appendices](#)

 You are in: [Home](#) > **North Solent Shoreline Management Plan**

North Solent Shoreline Management Plan

The North Solent Shoreline Management Plan (SMP) is the first revision to the Western Solent and Southampton Water SMP and the East Solent and Harbours SMP. The coastline covered by the Plan extends between Selsey Bill, in the east, and Hurst Spit, in the west, and includes Portsmouth, Langstone and Chichester Harbours.

SMPs aim to balance the management of coastal flooding and erosion risks, with natural processes, and the consequences of climate change. Due to the current legislative and funding arrangements, climate change and environmental considerations, it may not be possible to protect, or continue to defend land or property from flooding or erosion.

The North Solent SMP will therefore need to take account of natural coastal processes, existing defences, and the natural and built environments and be compatible with adjacent coastal areas.

Downloadable documents will usually be in PDF format, and as such you will need Adobe Acrobat to view them, which can be freely obtained by visiting <http://www.newforest.gov.uk/>



North Solent SMP Study Area

External Links

[Chichester District Council](#)
[Chichester Harbour Conservancy](#)
[Defra](#)
[Eastleigh Borough Council](#)
[Environment Agency](#)
[Fareham Borough Council](#)
[Gosport Borough Council](#)
[Hampshire County Council](#)
[Havant Borough Council](#)
[Natural England](#)
[New Forest District Council](#)
[New Forest National Park Authority](#)
[Portsmouth City Council](#)
[Southampton City Council](#)
[West Sussex County Council](#)
[Solent Forum](#)
[SCOPAC](#)

Useful Documents

[West Solent and Southampton Water SMP leaflet](#)
[West Solent Strategy Leaflet](#)
www.northsolentsmp.co.uk

Agendas, Minutes, Action Logs, Supporting Information, Memberships, Tasks, Stakeholder Engagement, Management and Policy Options