

## POLICY

From Present Day (up to 2025):	Medium-Term (2025 to 2055):	Long-Term (2055 to 2105):
Hold the Line	Hold the Line	No Active Intervention*
*Requirement for more detailed study (for management of site that recognises coastal change and investigates property level defence options)		

Indicative erosion zone up to 2025

Indicative erosion zone up to 2055

Indicative erosion zone up to 2105

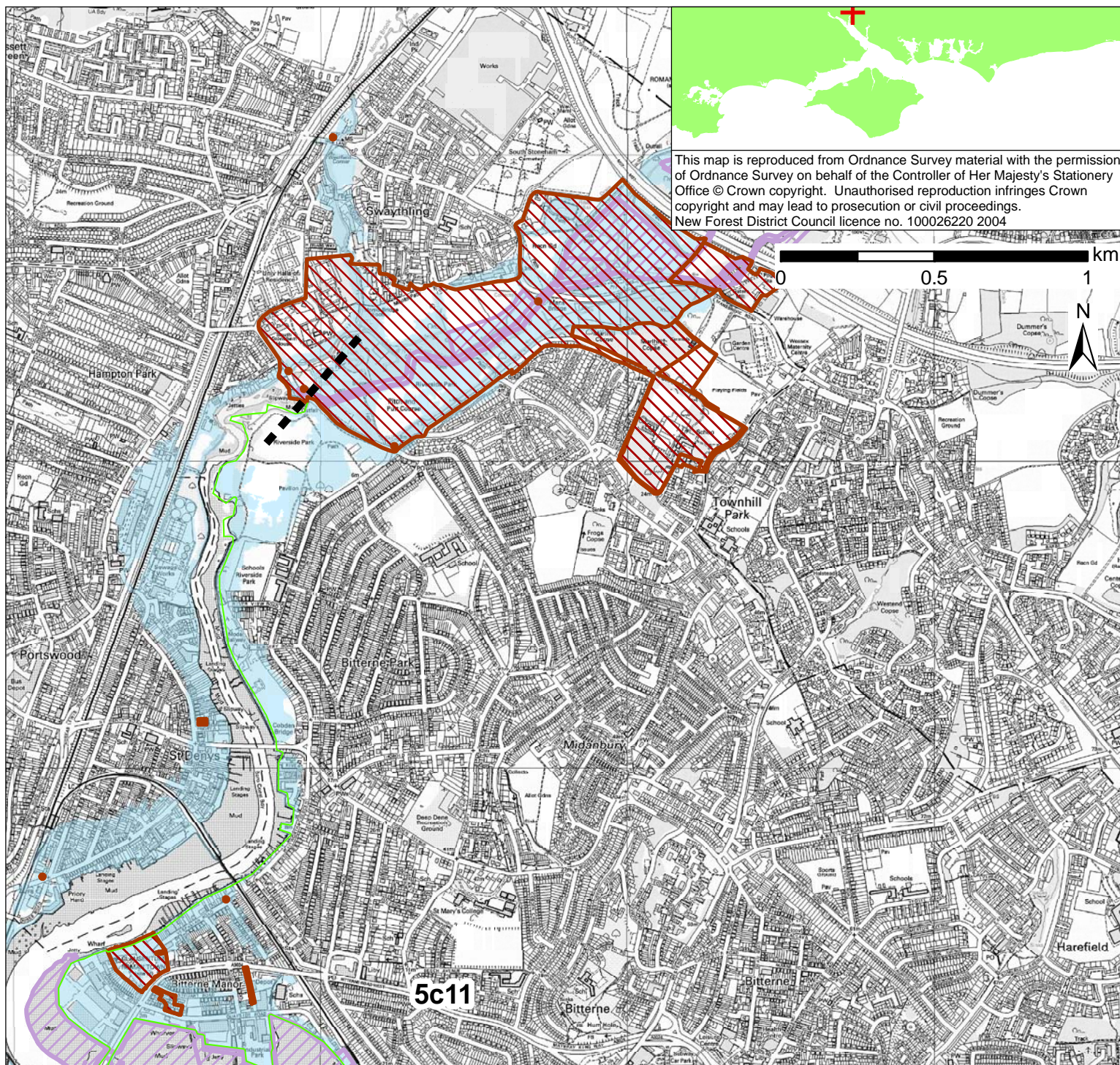
Policy Unit Boundary

International / National Designations

Important Heritage Sites

2115 Indicative Floodplain (1 in 200 year) provided from PUSH





## POLICY

From Present Day (up to 2025):	Medium-Term (2025 to 2055):	Long-Term (2055 to 2105):
Hold the Line	Hold the Line	No Active Intervention*
*Requirement for more detailed study (for management of site that recognises coastal change and investigates property level defence options)		

■ Indicative erosion zone up to 2025

■ Indicative erosion zone up to 2055

■ Indicative erosion zone up to 2105

■■■ Policy Unit Boundary

■ International / National Designations

■ Important Heritage Sites

■ 2115 Indicative Floodplain (1 in 200 year) provided from PUSH