

North Solent Shoreline Management Plan

Appendix I: Metadatabase and Bibliographic
database

Contents

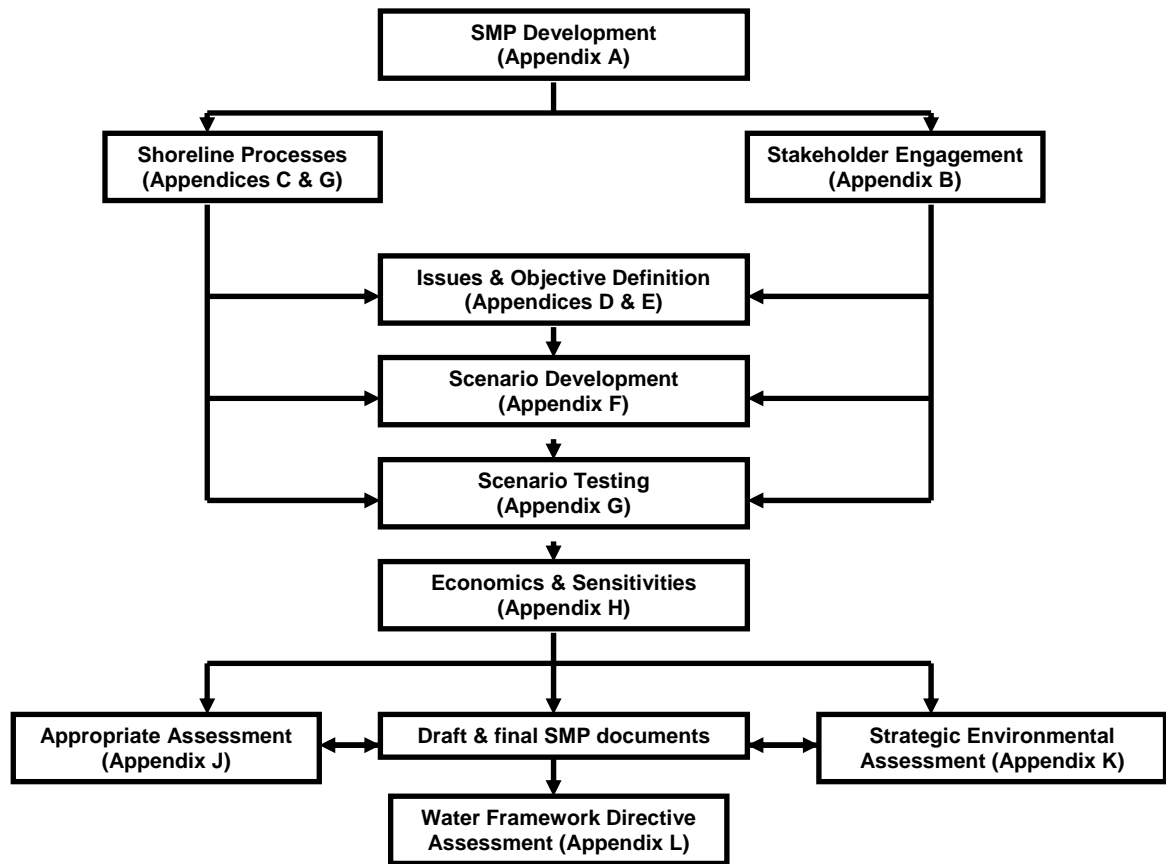
I1 OVERVIEW TO APPENDIX.....	1
I2 DOCUMENTS, REPORTS AND WEBSITES.....	2
I2.1 Main SMP Document	2
I2.2 Appendix A SMP Development	2
I2.3 Appendix B Stakeholder Engagement and Consultation Report	2
I2.4 Appendix C Baseline Process Understanding	2
I2.4.1 Part C1 Coastal Process Literature Review	2
I2.4.2 Part C2 Defence Assessment.....	9
I2.5 Appendix D Theme Review	9
I2.5.1 Reports	9
I2.5.2 Websites	12
I2.6 Appendix E Issues, Features and Objectives	12
I2.7 Appendix F Initial Policy Appraisal and Scenario Development	13
I2.7.1 Reports	13
I2.7.2 Websites	13
I2.8 Appendix G Scenario Testing.....	14
I2.9 Appendix H Economic Appraisal and Sensitivity Testing.....	14
I2.9.1 Reports	14
I2.9.1 Websites	15
I2.10 Appendix J Appropriate Assessment.....	15
I2.10.1 Reports	15
I2.10.2 Websites	16
I2.11 Appendix K Strategic Environmental Assessment.....	16
I2.11.1 Reports	16
I2.11.2 Websites	19
I2.12 Appendix L Water Framework Directive Assessment.....	19
I3 MAPPED DATA	20
I3.1 Main SMP Document- Policy Maps	20
I3.2 Appendix C Baseline Process Understanding	21
I3.2.1 Part C2 Defence Assessment.....	21
I3.2.2 Part C5.2 Coastal Flood Risk Maps	22
I3.2.3 Part C5.3 Intertidal Mapping	23
I3.2.4 Part C5.4 Erosion Risk Mapping	23
I3.3 Appendix D Theme Maps	23
I3.3.1 Part D2 Natural Environment	23
I3.3.2 Part D3 Landscape and Character	24
I3.3.3 Part D4 Historic Environment.....	24
I3.4 Appendix J Appropriate Assessment.....	26
I3.4.1 Part J3 Designated Sites	26
I3.4.2 Annex J2 Wader and Brent geese feeding and Roost Sites	26
I3.4.3 Annex J3 Managed Realignment Sites	26
I3.5 Appendix K Strategic Environment Assessment	27
I3.5.1 Annex K4 Managed Realignment Sites	27
I3.5 Water Framework Directive Assessment.....	27

The Supporting Appendices

All information used to support the Shoreline Management Plan is contained in a series of Appendices. In this way there is clarity in the decision-making process and the rationale behind the policies being promoted is both transparent and auditable. The appendices are:

Appendix	Subject	Detail
A	SMP Development	Reports the history of development of the SMP, describing fully the plan and policy decision-making process
B	Stakeholder Engagement	All communications from the stakeholder process are provided here, together with information arising from the consultation process
C	Baseline Process Understanding	Includes a baseline process report, defence assessment, NAI and WPM assessments and summarises data used in assessments
D	Theme Review	This report identifies and evaluates the environmental features (human, natural, historical and landscape)
E	Issues & Objective Evaluation	Provides information on the issues and objectives identified as part of the Plan development, including appraisal of their importance
F	Initial Policy Appraisal & Scenario Development	Presents the consideration of generic policy options for each frontage, identifying possible acceptable policies, and their combination into 'scenarios' for testing
G	Scenario Testing	Presents the policy assessment and appraisal of objective achievement towards definition of the Preferred Plan
H	Economic Appraisal & Sensitivity Testing	Presents the economic analysis undertaken in support of the Preferred Plan
I	Metadatabase and Bibliographic database	All supporting information used to develop the SMP is referenced for future retrieval and examination
J	Appropriate Assessment	Presents an assessment of the effect the plan will have on European sites
K	Strategic Environmental Assessment	Presents the various items undertaken in developing the Plan specifically related to the requirements of the EU Council Directive 2001/42/EC (Strategic Environmental Assessment Directive)
L	Water Framework Directive Assessment	Presents an assessment of the implications of the Water Framework Directive

The broad relationships between the appendices are as below:



I1 OVERVIEW TO APPENDIX

This appendix is divided into 2 parts:-

- I2- Documents, Reports and Websites
- I3- Mapped Data

I2 includes a list of the key references used in the production of the North Solent SMP2 main documents and support appendices. The bibliographic report is separated into each appendix. The reports listed below include both documents, sources of information, websites and published papers which have been both referred to throughout the study and not necessarily cited. Reference lists which include cited documents are included in the SMP document and accompanying Appendices.

I3 includes all geographically referenced or mapped data used with this SMP. The mapped data has been separated according to the report or appendix the data refers to.

I2 DOCUMENTS, REPORTS AND WEBSITES

I2.1 Main SMP Document

Department of Environment, Food and Rural Affairs (2006a) *Shoreline Management Plan Guidance Volume 1: Aims and Requirements*. Department of Environment, Food and Rural Affairs.

Department of Environment, Food and Rural Affairs (2006b) *Shoreline Management Plan Guidance Volume 2: Procedures*.

I2.2 Appendix A SMP Development

Cope, S.N., Bradbury, A.P. and Gorczynska, M. (2008) *Solent Dynamic Coast Project: A tool for SMP*. Channel Coastal Observatory.

Defra (2006) *Flood and Coastal Defence Project Appraisal Guidance Note 3: Economic Appraisal (FCDPAG3)*.

Department of Environment, Food and Rural Affairs (2006a) *Shoreline Management Plan Guidance Volume 1: Aims and Requirements*. Department of Environment, Food and Rural Affairs.

Department of Environment, Food and Rural Affairs (2006b) *Shoreline Management Plan Guidance Volume 2: Procedures*.

Halcrow and Partner Ltd (1997) *East Solent Shoreline Management Plan*.

Halcrow and Partners Ltd (1998) *Shoreline Management Plan: Western Solent and Southampton Water*.

I2.3 Appendix B Stakeholder Engagement and Consultation Report

Department of Environment, Food and Rural Affairs (2006a) *Shoreline Management Plan Guidance Volume 1: Aims and Requirements*. Department of Environment, Food and Rural Affairs.

Department of Environment, Food and Rural Affairs (2006b) *Shoreline Management Plan Guidance Volume 2: Procedures*.

I2.4 Appendix C Baseline Process Understanding

I2.4.1 Part C1 Coastal Process Literature Review

ABP Research and Consultancy Ltd (1989) *Effects of Proposed Reclamation at Royal Pier: Reports Nos. 390 and 391, xiii and 81pp; iii and 37pp*.

ABP Research and Consultancy Ltd (1993) Southampton Water Siltation and Dredging Study. Report 437. Report to ABP Southampton.

ABP Research and Consultancy Ltd (2000) Geomorphological Analysis of East Head and Chichester Harbour, Report R893, Report to Chichester Harbour

ABP Research and Consultancy Ltd (2000c) Dibden Terminal. A Summary of Changes in the Physical Environment of Southampton Water. Technical Statement, TS/ME2. Report to ABP Southampton, 37pp, 3 Appendices, 7 Annexes, 10 Tables and 27 Figures.

Arun District Council (2007) Coastal Defence – Pagham / Church Norton Spit *decision paper*.

Bailey, B. & Pearson, A. (2007). Change in detection mapping and analysis of salt marsh areas of Central Southern England from Hurst Castle Spit to Pagham Harbour. *Journal of Coastal Research*, 23 (6); 1549-1564.

Banyard, L. and Fowler, R. (2000) Lee-on-the-Solent Coast Protection Scheme, in: M B Collins and K Ansell (eds.) *Solent Science - A Review*, Amsterdam: Elsevier Science, 115-120.

Beachy Head to Selsey Bill Shoreline Management Plan (2006) Halcrow report to SDCG members.

Bradbury, A.P. (1998) Response of Shingle Barrier Beaches to Extreme Hydrodynamic Conditions. Ph.D Thesis, School of Ocean and Earth Science, Faculty of Science, University of Southampton.

Bradbury, A.P., Cope, S.N., and, Prouty D.B. (2005) Predicting the Response of Shingle Barrier Beaches under extreme wave and water level conditions in Southern England. *Proceedings of the 5th International Conference on Coastal Dynamics 2005*.

Bradbury, A.P., Mason, T.E., Holt, M. (2006) Design and management implications for the use of modelled wave data in the south-east - a comparison between modelled and measured conditions. *Proceedings of the 41st DEFRA Flood and Coastal Management Conference 2006*.

Bradbury, A.P., Picksley, D., and Webbon, R. (2007) Using Monitoring Data to Improve Beach Management. *Proceedings of the 42nd Defra Flood and Coastal Management Conference 2007*.

Bray, M.J. (1993) Historical Beach Movements and Coast Protection: Impacts and Implications Applied to Lee-on-the-Solent. Report to Sir William Halcrow and Partners. Department of Geography, University of Portsmouth, 39pp.

Bray, M.J. (2007) East Head and West Wittering: Interpretation of beach changes 2003 – 2006. Report to Chichester District Council.

Bray, M.J., Carter, D.J. and Hooke, J.M. (1995) Littoral Cell Definition and Budgets for Central Southern England, *Journal of Coastal Research*, 11, 381-400.

Bray, M.J., Hooke, J.M., Carter, D.J. and Clifton, J. (1998) Littoral Sediment Transport Pathways, Cells and Budgets within the Solent, in Collins, M.B. and Ansell, K. (Eds) *Solent Science - A Review*, Amsterdam: Elsevier Science, 103-106.

Bray, M. and Teasdale, P. (2007) East Head Coring: reconnaissance survey. Report by Universities of Portsmouth and Brighton, February 2007, 9p.

Brian Colquhoun and partners (1992) Fareham Coastal Study, 2 Volumes. Report to Fareham Borough Council, 17pp. and Appendices.

Clarke, M.J. and Gurnell, A.M. (1987) The North Solent National Nature Reserve - Gull Island. Environmental Background and Proposal for Coastal Monitoring, Geodata Unit, University of Southampton: Report to Shell UK Exploration and Production, 18pp.

Codd, K.A. (1972) A Study of the Clay and Silt of the Beaulieu River Bottom Sediment, unpublished MSc. Dissertation, Department of Oceanography, University of Southampton.

Colenutt, A.J. (2002) Lymington River Cross Sections. Map and surveyed profile plots supplied by Andrew Colenutt, New Forest District Council.

Cope, S.N. (2004) Breaching of UK Coarse-clastic Barrier Beach Systems: Methods developed for predicting breach occurrence, stability and flooded hinterland evolution. Ph.D thesis, Department of Geography, University of Portsmouth.

Cope, S.N. (2005). Predicting overwashing and breaching for southern U.K coarse-clastic barrier beaches and spits *Proc. Coastal Dynamics 2005*.

Cope, S.N., Gorczynska, M. and Webbon, R. (2007) CCO Aerial Photography Report; Langstone Harbour. Report TR2.

Cope, S.N., Bradbury, A.P. and Gorczynska, M. (2007) A Strategic Approach to Managing Mudflat and Saltmarsh Loss across the North Solent, U.K. *Proc. ICE International Conference on Coastal Management 2007*.

Cope, S.N., Bradbury, A.P. and Gorczynska, M. (2008) *Solent Dynamic Coast Project: A tool for SMP*. Channel Coastal Observatory.

CCO (2007) West Solent Annual Report

CCO (2007) East Solent Annual Report

CCO (2008) West Solent Annual Report

CCO (2008) *East Solent Annual Report*

Defra (2006) Flood and Coastal Defence Project Appraisal Guidance Note 3: Economic Appraisal (FCDPAG3)

Defra (2006) Shoreline Management Plan Guidance Volume 1: Aims and requirements.

Dobbie and Partners (1987) Repairs to Dolphin, Haslar and Monkton Sea Walls - 2 Vols - Vol 1: Report; Vol 2: Appendices. Report to Property Services Agency, 48pp.

Dobson, E.B. (1964) The Growth of Warren Farm Spit, Hampshire, Abstracts of Papers, 20th International Geographical Union Congress (London), p111.

Dyer, K.R. (1980) Sedimentation and Sediment Transport, in The Solent Estuarine System: An Assessment of Present Knowledge, NERC, Publication Series C, No. 22, 20-24.

Flood, R.D. (1981) Distribution, morphology and origin of sedimentary furrows in Cohesive Sediments, Southampton Water, *Sedimentology*, 28(4), 511-529.

Fowler, R. (1998) One Man's Rubbish is Another Man's Resources: The Beneficial Use of Dredged Material in the Lee-on-the-Solent Coast protection Scheme, Proceedings of the 33rd MAFF Conference of River and Coastal Engineers, Keele, 4.3.1 to 4.3.11.

Halcrow and Partner Ltd (1997) *East Solent Shoreline Management Plan*.

Halcrow and Partners Ltd (1998) *Shoreline Management Plan: Western Solent and Southampton Water*.

Halcrow (2002) FutureCOAST.

Halcrow (1993) Lee-on-the-Solent Beach Study. Report to Gosport Borough Council, 62pp. and Appendices.

Halcrow (2000) Portsea Island Coastal Strategy Study, Stage 1, Scoping Study, 2 volumes, Report to Portsmouth City Council, Vol. 1: 136pp; Vol. 2: no pagination.

Hampshire County Council (2003) Review of the effects of climate Change on Hampshire County Council 's Coastal Land Holdings. Revised Draft Report September 2003. 99p.

Harlow, D. (1980) Sediment Processes, Selsey Bill to Portsmouth, Unpublished PhD thesis, Department of Civil Engineering, University of Southampton.

Harlow, D.A. (1983) West Pole Sands, Havant Borough Council, Technical Services Department, Internal Report, 3pp.

Havant Borough Council (1999) Eastoke Beach Management Strategy.

Hinsley, R.M. (1990) Coastal Changes from Lepe to Calshot (The Solent); What is Happening and Why, unpublished student report, Nene College, Northampton, 46pp.

Hodson, F. and WestT, I.M. (1972) Holocene Deposits at Fawley, Hampshire and the Development of Southampton Water, Proceedings Geologists' Association, 83(4), 421-441.

Hooke, J.M. and Rliley, R.C. (1987) Historical Change on the Hampshire Coast, 1870-1965, Department of Geography, Portsmouth Polytechnic: Report to Hampshire County Council, 36pp.

HR Wallingford (1995) Pagham Harbour to River Hamble Coastal Strategy Study, Volume 2: Portsmouth Harbour to River Hamble. Report EX 3252. Report to Pagham to Hamble Coastal Strategy Group, 64pp and 150 Tables and Figures.

HR Wallingford (2000) Flood Risk: King's Quay, Emsworth, Report to Havant Borough Council, 6pp.

HR Wallingford (2002) River Arun to Pagham Coastal Defence Strategy. Part 1: The Strategy Plan. Consultation Draft. Report EX 4466. Report produced for the Environment Agency and Arun District Council.

Human, M. (1961) Preliminary Survey of Warren Farm Spit at the Mouth of the River Beaulieu, Hampshire, Wessex Geography Year, 2, 22-30.

Hydraulics Research Ltd (1984) HMS Dolphin: An Initial Appraisal of the Effects of Dredging Ballast Bank, Report EX1232, Report to Property Services Agency, 18pp.

Hydraulics Research Ltd (1987) Review of the Hampshire Coastline, Report EX 1601, Vol 1, 93pp. Vol 2, 125pp.

Hydraulics Research Ltd (1988) Wootton Hard, Fishbourne, Isle of Wight: Factors causing Erosion of a Shingle Bank. Report EX 1723, to Medina Borough Council from Halcrow (2001).

Korab, A.M. (1990) A Study of the Coastal Changes along the East Solent Coast: The Hamble Estuary to Fort Blockhouse, Unpublished Dissertation, MSc in Environmental Change, Department of Geography, Portsmouth Polytechnic, vi + 84pp.

Langhorne, D.N., Heathershaw, A.D. and Read, A.A. (1982) The Mobility of Seabed Gravel in the West Solent: A Report on Site Selection, Seabed Morphology and Sediment Characteristics, Institute of Oceanographic Sciences, Report No. 140, 65pp.

Lewis and Duvivier (1948) Report on Fareham-Hill Head Sea Defences. Report to Fareham Urban District Council, 8pp.

Lewis and Duvivier (1954) Report on Coast Protection: River Hamble to Saltern's Park. Report to Fareham Urban District Council, 9pp.

Lewis and Duvivier (1957) Report on Coast Protection at Lee-on-the-Solent. Report to Gosport Borough Council, Report 2/10, 6pp.

Lewis and Duvivier (1962) Report on the Sea Defences, Hill Head Harbour to Lee-on-the-Solent boundary. Report to Fareham Urban District Council, 6pp.

Lobeck, R.T.G. (1995) *A Study into Coastal Change Between the Beaulieu River and Calshot Spit Over the Past 125 Years*, unpublished MSc Dissertation, Department of Oceanography, University of Southampton, 45pp and 3 Appendices.

Lock, S. (1999) *An Assessment of the Contribution of Sediment Inputs from Local Cliff Erosion to the Shoreline, and Evolution of Calshot Spit*, unpublished BSc Geographical Science Dissertation, Department of Geography, University of Portsmouth, 84pp.

Lonsdale O, B.J. (1969) *A Sedimentary Study of the Eastern Solent*, unpublished MSc thesis, Department of Oceanography, University of Southampton, 38pp.

Mackintosh, I and Rainbow, J. (1995) *Hurst Spit Stabilisation Scheme Project No. 02103*. Report to New Forest District Council.

New Forest District Council *West Solent Coastal Defence Strategy Study*, in progress. .

New Forest District Council (1997) Coastal Management Plan, 129pp.

New Forest District Council (2001) *Scoping Study for the Western Solent Coastal Defence Strategy*.

Nicholls, R.J. (1985) *The Stability of the Shingle Beaches in the Eastern half of Christchurch Bay*, Ph.D Thesis, Dept of Civil Engineering, University of Southampton.

Nicholls, R.J. and Webber, N.B. (1987) The Past, Present and Future Evolution of Hurst Castle Spit, Hampshire, *Progress in Oceanography*, 18, 119-137.

Oranjewould International BV (1988, 1990) Hampshire's Coastal Problems, Report to Hampshire County Council. 2 Volumes

Oranjewould (1991) Hampshire's Coast: Eastleigh, Fareham and Gosport Districts: Frameworks for Coastal Defence. Report BV-28417. Report to Hampshire County Council.

Posford Duviver (1994) Lepe Coast Protection. Report on Sediment Transport. Report to New Forest District Council, 19pp and 4 Appendices.

Posford Duviver (1997) SOCPAC Sediment Inputs Research Project. Phase 2. Cliff Erosion. Report to SCOPAC

Posford Duviver (1999) SCOPAC Research Project. Sediment Inputs to the Coastal System. Summary Document. Report to SCOPAC.

Price, D. and Townend, I. (2000) *Hydrodynamic, Sediment Process and Morphological Modelling*, in: M B Collins and K Ansell (eds.) *Solent Science - A Review*, Amsterdam: Elsevier Science, 55-70.

Pugh, D. T. (1989). *Tides, surges and Mean Sea-Level*. Chichester: John Wiley & Sons

Rendal Geotechnics and University of Portsmouth(1996) SCOPAC Sediment Inputs Project: Fluvial Flows. Report to SCOPAC. 48pp

RESPONSE (2006) *Responding to the Impacts of Climate Change*. European LIFE Environment Project 2003 – 2006.

Robinson, A.H.W. (1963) *Physical Factors in the Maintenance of Port Approach Channels*, Dock and Harbour Authority, 43(509), 11-20.

Sanderson, N. (2003) Vegetation Survey of Lower Test Marshes Reserve. Report to Hampshire Wildlife Trust.

Sawyer, K.E. (1978) *Landscape Studies: An Introduction to Geomorphology*, Edward Arnold, London, 56-58.

SCOPAC Coastal Sediment Transport Study (2004) Bray, M.J., Carter, D.J. and Hooke, J.M. Report to Coastal Groups.

SCOPAC Barrier and Spits (In progress.) Bradbury, A.P. and Cope, S.N. Report to Coastal Groups.

Solent CHAMP (Coastal Habitat Management Plan) (2003) Bray, M. and Cottle, R. Report to English Nature and the Environment Agency. G5472/01/C01/R/R.A/PBor.

Tubbs, C. (1999) *The Ecology, Conservation and History of the Solent*, Chichester: Packard Publishing Ltd, 179pp.

Venner, J. (1986a) *Proposals to reduce the maintenance cost of coastal protection along the Solent shore of the Beaulieu Estate*. Unpublished document 23.10.86, 4p.

Venner, J. (1993) *Soft Coast Defences. The Use and Misuse of Groynes on the North Solent NNR*, Enact, 1(3), 20-21.

Wallace, H. (1988) *Sandy Siltation or Survival?* Unpublished manuscript, 18pp.

Webber, N.B. (1979) *An Outline Study of the Coastline, Hook to Titchfield Haven - Some General Observations and Comments in Relation to the Project Report by Wheeler (1979)*. Report to Fareham Borough Council, 9pp.

Webber, N.B. (1980) *Hydrography and Water Circulation in the Solent, in The Solent Estuarine System: An Assessment of Present Knowledge*, NERC Publications Series C, No. 22, 25-35.

Webber, N.B. (1982) *Accretion of Shingle at Eastney Outfall - A Preliminary Appraisal*, Report to Southern Water Authority (Hampshire Division), 23pp.

Wheeler, R.G. (1979) *A Study of the Coastal Engineering Problems at Hook, Warsash*, Unpublished Third Year project report, Department of Civil Engineering, University of Southampton, 173pp.

Whitcombe, L.J. (1995) *Sediment Transport Processes, with Particular Reference to Hayling Island*. Unpublished PhD thesis, Department of Oceanography, University of Southampton, 294pp.

Williams, E. (1988) *A Study of the Growth of Warren Farm, Spit, Hampshire, with Reference to Historical and Cartographic Evidence*, unpublished B.A. Dissertation, Department of Geography, Portsmouth Polytechnic, 53pp.

W.S. Atkins Ltd (1998) *Hayling Island Coastal Defences Strategy*, 4 Volumes. Report to Environment Agency

Zieder, A.K. (1990) *Nature of Longitudinal Erosional Furrows of Southampton Water*, unpublished MSc dissertation, Department of Oceanography, University of Southampton, 53pp.

12.4.2 Part C2 Defence Assessment

Department of Environment, Food and Rural Affairs (2006a) *Shoreline Management Plan Guidance Volume 1: Aims and Requirements*. Department of Environment, Food and Rural Affairs.

Department of Environment, Food and Rural Affairs (2006b) *Shoreline Management Plan Guidance Volume 2: Procedures*.

12.5 Appendix D Theme Review

12.5.1 Reports

Chichester District Council (1999) *Chichester District Local Plan First Review*.

Chichester Harbour Conservancy and the Countryside Agency (2005) *Chichester Harbour AONB Landscape Character Assessment*.

Communities and Local Government (2005) *PPS9 Planning Policy Guidance on Nature Conservation*.

Cope, S.N., Bradbury, A.P. and Gorczynska, M. (2008) *Solent Dynamic Coast Project: A tool for SMP*. Channel Coastal Observatory.

Department of Environment, Food and Rural Affairs (2006a) *Shoreline Management Plan Guidance Volume 1: Aims and Requirements*. Department of Environment, Food and Rural Affairs.

Department of Environment, Food and Rural Affairs (2006b) *Shoreline Management Plan Guidance Volume 2: Procedures*.

Eastleigh Borough Council (2006) *Eastleigh Borough Council Local Plan Review (2001-2011)*.

English Heritage (2003) *Coastal Defence and the Historic Environment*. English Heritage Guidance.

English Heritage (2006) *Shoreline Management Plan review and the Historic Environment*. English Heritage Guidance.

English Heritage (2006) *Shoreline Management Plan review and the Historic Environment*. English Heritage Guidance.

English Nature (2001) *Solent European Marine Site: English Nature's advice given under Regulation 33 (2) of the Conservation (Natural Habitats & c.) Regulations 1994*.

English Nature (2001) *Pagham Harbour: English Nature's advice given under Regulation 33 (2) of the Conservation (Natural Habitats & c.) Regulations 1994*.

Environment Agency (2008) *Pagham to East Head Coastal Defence Strategy*.

Environment Agency (2009) *Portchester Castle to Emsworth Draft Coastal Flood and Erosion Risk management Strategy*. Report in partnership with Fareham Borough council, Portsmouth City Council, Havant Borough Council and Chichester District Council.

Fareham Borough Council (2000) *Fareham Borough Local Plan Review*.

Gosport Borough Council (1996) *Landscape and Townscape study*.

Gosport Borough Council (2006) *Gosport Borough Local Plan Review (2001-2016)*.

- Hampshire County Council (1998) *Hampshire, Portsmouth and Southampton Minerals and Waste Local Plan*.
- Hampshire County Council (2000) *The Hampshire Landscape – A Strategy for the Future*.
- Hampshire County Council (2006) *Hampshire Local Transport Plan (2006–2011)*.
- Hampshire County Council (2008) *Hampshire Minerals and Waste Core Strategy*.
- Hampshire Biodiversity Partnership (2003) *Biodiversity Action Plan for Hampshire*.
- Hampshire and Wight Trust for Maritime Archaeology (2006) *SCOPAC Archaeological & Coastal Change: Project Report*
- Halcrow and Partner Ltd (1997) *East Solent Shoreline Management Plan*.
- Halcrow and Partners Ltd (1998) *Shoreline Management Plan: Western Solent and Southampton Water*.
- Havant Borough Council (2005) *Havant District Wide Local Plan First Review*.
- Havant Borough (2007) *Townscape, Landscape and Seascape Character Assessment*.
- Momber, G. Rackley, A. and Draper S. (1994) *New Forest Coastal Archaeological Resource*.
- Mouchel Parkman (2009) *River Itchen, Weston Shore, Netley and River Hamble Draft Coastal Defence Study*.
- New Forest District Council (2005) *Coastal Management Plan*.
- New Forest District Council (2005) *New Forest District Council Local Plan First Alteration*.
- New Forest Park Authority (2008) *National Park Draft Local Development Framework Core Strategy and Development Policies*.
- Portsmouth City Council (2006) *Portsmouth City Local Plan (2001-2011)*.
- Portsmouth City Council (2005) *The Second Local Transport Plan for Portsmouth (2006/7 – 2010/11)*.
- Solent Forum (2004) *State of the Solent*.
- South East England Regional Assembly (2009) *The South East Plan: Regional Spatial Strategy for the South East of England*.

Southampton City Council (2006) *City of Southampton Local Plan Review*.

Southampton City Council (2006) *The Second Local Transport Plan for Southampton (2006-2011)*.

Sussex Biodiversity Partnership (1997) *Sussex Biodiversity Action Plan*.

Test Valley Borough Council (2006) *Test Valley Borough Local Plan*.

West Sussex County Council (2003) *A Strategy for the West Sussex Landscape*.

West Sussex and Hampshire County Councils (2007) *Chichester Harbour Area of Outstanding Natural Beauty*. Technical Synthesis.

12.5.2 Websites

Fareham Borough Council (accessed 2008):

<http://www.fareham.gov.uk/council/departments/planning/landscape/character/characterareas.asp>

Joint Nature Conservation Committee (accessed 2008): <http://www.jncc.gov.uk/>

The Royal Society for the Protection of Birds (accessed 2008):

<http://www.rspb.org.uk/reserves/guide/l/langstoneharbour/index.asp>

Office for National Statistics (accessed 2008):

<http://www.statistics.gov.uk/census2001/census2001.asp>

Natural England (accessed 2008): <http://www.naturalengland.org.uk/>

Hampshire Biodiversity Partnership (accessed 2008):

<http://www.hampshirebiodiversity.org.uk/>

Sussex Biodiversity Partnership (accessed 2008):

<http://www.biodiversitysussex.org>

12.6 Appendix E Issues, Features and Objectives

CAG Consultants and Land Use Consultants (2001) *Quality of Life: Application Guide for Statutory and Non-statutory Plans*. Report prepared for Countryside Agency, English Heritage, English Nature and Environment Agency.

Cope, S.N., Bradbury, A.P. and Gorczynska, M. (2008) *Solent Dynamic Coast Project: A tool for SMP*. Channel Coastal Observatory.

Department of Environment, Food and Rural Affairs (2006a) *Shoreline Management Plan Guidance Volume 1: Aims and Requirements*. Department of Environment, Food and Rural Affairs.

Department of Environment, Food and Rural Affairs (2006b) *Shoreline Management Plan Guidance Volume 2: Procedures*.

Halcrow and Partner Ltd (1997) *East Solent Shoreline Management Plan*.

Halcrow and Partners Ltd (1998) *Shoreline Management Plan: Western Solent and Southampton Water*.

12.7 Appendix F Initial Policy Appraisal and Scenario Development

12.7.1 Reports

Beachy Head to Selsey Bill Shoreline Management Plan 2.

Cope, S.N., Bradbury, A.P. and Gorczynska, M. (2008) *Solent Dynamic Coast Project: A tool for SMP*. Channel Coastal Observatory.

Cox, J. (2009) *North Solent Wader and Wildfowl High Water and Terrestrial Habitat Use: Workshop Outputs*.

Cox, J. (2009) *North Solent Habitat Assessment Matrix*.

Department of Environment, Food and Rural Affairs (2006a) *Shoreline Management Plan Guidance Volume 1: Aims and Requirements*. Department of Environment, Food and Rural Affairs.

Department of Environment, Food and Rural Affairs (2006b) *Shoreline Management Plan Guidance Volume 2: Procedures*.

Environment Agency (2008) *Pagham to East Head Coastal Defence Strategy*.

Environment Agency (2009) *Portchester Castle to Emsworth Draft Coastal Flood and Erosion Risk management Strategy*. Report in partnership with Fareham Borough council, Portsmouth City Council, Havant Borough Council and Chichester District Council.

Mouchel Parkman (2009) *River Itchen, Weston Shore, Netley and River Hamble Draft Coastal Defence Study*.

Natural England (2006) *Managing Change at the Coast*.

12.7.2 Websites

Partnership for Urban South Hampshire (accessed 2009): <http://www.push.gov.uk>

12.8 Appendix G Scenario Testing

Cope, S.N., Bradbury, A.P. and Gorczynska, M. (2008) *Solent Dynamic Coast Project: A tool for SMP*. Channel Coastal Observatory.

Department of Environment, Food and Rural Affairs (2006a) *Shoreline Management Plan Guidance Volume 1: Aims and Requirements*. Department of Environment, Food and Rural Affairs.

Department of Environment, Food and Rural Affairs (2006b) *Shoreline Management Plan Guidance Volume 2: Procedures*.

Environment Agency (2008) *Pagham to East Head Coastal Defence Strategy*.

Environment Agency (2009) *Portchester Castle to Emsworth Draft Coastal Flood and Erosion Risk management Strategy*. Report in partnership with Fareham Borough council, Portsmouth City Council, Havant Borough Council and Chichester District Council.

Mouchel Parkman (2009) *River Itchen, Weston Shore, Netley and River Hamble Draft Coastal Defence Study*.

12.9 Appendix H Economic Appraisal and Sensitivity Testing

12.9.1 Reports

Defra (2008) *Flood and Coastal Defence Appraisal Guidance Economic appraisal Supplementary Note to Operating Authorities: Valuation of Agricultural and Output for Appraisal purposes*.

Defra (2006) *Flood and Coastal Defence Project Appraisal Guidance Note 3: Economic Appraisal (FCDPAG3)- Climate Change Impacts*.

Defra (2004) *NADNAC National Appraisal of Defence Needs and Costs Study*.

Defra (2006) *Shoreline Management Plan Guidance, Volume 1: Aims and Requirements*.

Defra (2006) *Shoreline Management Plan Guidance, Volume 2: Procedures*.

Environment Agency (2008) *Pagham to East Head Coastal Defence Strategy*.

Environment Agency (2009) *Portchester Castle to Emsworth Draft Coastal Flood and Erosion Risk management Strategy*. Report in partnership with Fareham Borough council, Portsmouth City Council, Havant Borough Council and Chichester District Council.

Mouchel Parkman (2009) *River Itchen, Weston Shore, Netley and River Hamble Draft Coastal Defence Study*.

Halcrow (2002) FutureCOAST.

I2.9.1 Websites

British Broadcast Corporation (accessed 2009):

http://news.bbc.co.uk/1/shared/spl/hi/in_depth/uk_house_prices/counties/html/counties.stm - for residential property values (July 2009)

Department for Environment and Rural Affairs (accessed 2009):

http://statistics.defra.gov.uk/esg/publications/auk/2008/AUK2008CHAPTER4_AUK.pdf.- for agricultural land values

I2.10 Appendix J Appropriate Assessment

I2.10.1 Reports

Conservation (Natural Habitats, &c.) Regulations 1994. (SI:2716), London: HMSO.

Cope, S.N., Bradbury, A.P. and Gorczynska, M. (2008) *Solent Dynamic Coast Project: A tool for SMP*. Channel Coastal Observatory.

Cox, J. (2009) *North Solent Wader and Wildfowl High Water and Terrestrial Habitat Use: Workshop Outputs*.

Cox, J. (2009) *North Solent Habitat Assessment Matrix*.

Department for Communities and Local Government (2006) *Planning for the protection of European Sites: Appropriate Assessment: Guidance for Regional Spatial Strategies and Local Development Documents*.

English Nature (2001) *Solent European Marine Site: English Nature's advice given under Regulation 33 (2) of the Conservation (Natural Habitats & c.) Regulations 1994*.

English Nature (2001) *Pagham Harbour: English Nature's advice given under Regulation 33 (2) of the Conservation (Natural Habitats & c.) Regulations 1994*.

Environment Agency *Appropriate Assessment Methodology for the Medway and Swale SMP2*.

European Commission (2001) *Assessment of plans and projects affecting Natura 2000 sites*.

Natural England (2007) *Habitats Regulations Assessment of Regional Strategies and Sub-Regional Strategies*.

I2.10.2 Websites

Joint Nature Conservation Committee (accessed 2009): <http://www.jncc.gov.uk/>

Natural England (accessed 2009): <http://www.naturalengland.org.uk/>

I2.11 Appendix K Strategic Environmental Assessment

I2.11.1 Reports

Associated British Ports (2009) *Port of Southampton Master Plan 2009: Consultation Document*.

Bray and Cottle (2003) *Solent Coastal Habitat Management Plan*. Report by Posford Haskoning and University Portsmouth to English Nature and Environment Agency.

Chichester District Council (1999) *Chichester District Local Plan First Review*.

Chichester Harbour Conservancy (2009) *Chichester Harbour Area of Outstanding Natural Beauty: Management Plan 2009-2014*.

Communities and Local Government (2005) *PPS9 Planning Policy Guidance on Nature Conservation*.

Cope, S.N., Bradbury, A.P. and Gorczynska, M. (2008) *Solent Dynamic Coast Project: A tool for SMP*. Channel Coastal Observatory.

Countryside Agency and Scottish Natural Heritage (2003) *Landscape Character Assessment: Topic Paper 9: Climate Change*.

Cox, J. (2009) *North Solent Wader and Wildfowl High Water and Terrestrial Habitat Use*. Report by Jonathan Cox Associates.

Department of Communities and Local Government (2006) *PPS25: Development and Flood Risk*.

Department of Communities and Local Government (2010) *PPS20 Supplement: Development and Coastal Change*.

Department of Environment, Food and Rural Affairs (2002) *Working with the Grain of Nature: A Biodiversity Strategy for England*.

Department of Environment, Food and Rural Affairs (2004) *Making Space for Water: Developing a New Government Strategy for Flood and Coastal Erosion Risk Management in England*.

Department of Environment, Food and Rural Affairs (2006a) *Shoreline Management Plan Guidance Volume 1: Aims and Requirements*.

Department of Environment, Food and Rural Affairs (2006b) *Shoreline Management Plan Guidance Volume 2: Procedures*.

Eastleigh Borough Council (2002) *Eastleigh Borough Council Biodiversity Action Plan*.

Eastleigh Borough Council (2006) *Eastleigh Borough Council Local Plan Review (2001-2011)*.

English Heritage (2003) *Coastal Defence and the Historic Environment*.

English Nature (2003) *Conservation of Dynamic Coasts; A Framework for Managing Natura 2000*.

English Nature (2005) *Our Coasts and Seas: Making Space for People, Industry and Wildlife*.

Environment Agency (2008a) *Pagham to East Head Coastal Defence Strategy*.

Environment Agency (2008b) *Draft River Basin Management Plan for the South East River Basin District*.

Environment Agency (2008c) *South East State of the Environment Report*.

Environment Agency (2009) *Strategic Environmental Assessment: advice for application to Shoreline Management Plans*.

Environment Assessment of Plans and Programmes Regulations 2004. (SI 1633), London: HMSO.

Environment Resources Management (2004) *Sustainability report of the South East Plan: Scoping Report*.

Fareham Borough Council (2000) *Fareham Borough Local Plan Review*.

Gosport Borough Council (2006) *Gosport Borough Local Plan Review (2001-2016)*.

Government Office for the South East (2004) *Regional Transport Strategy for the South East*.

Halcrow (1997) *East Solent Shoreline Management Plan*. Halcrow and Partner Ltd

Halcrow (1998) *Shoreline Management Plan: Western Solent and Southampton Water*. Halcrow and Partners Ltd.

Hampshire County Council (1998) *Hampshire, Portsmouth and Southampton Minerals and Waste Local Plan*

Hampshire County Council (2000) *The Hampshire Landscape – A Strategy for the Future*.

Hampshire Biodiversity Partnership (2003) *Biodiversity Action Plan for Hampshire*.

Hampshire County Council (2003) *River Hamble Estuary Management Plan 2003-2008*.

Hampshire County Council (2006) *Hampshire Local Transport Plan (2006–2011)*.

Hampshire County Council (2008a) *Hampshire Minerals and Waste Core Strategy*.

Hampshire County Council (2008b) *Local Transport Plan*.

Havant Borough Council (2009) *Havant Borough Draft Core Strategy*.

McInnes, R. (2006) *Responding to the Impacts of Climate Change*. Report for the EU Life Environment Project.

New Forest District Council (2005) *Coastal Management Plan*.

New Forest Park Authority (2008) *National Park Draft Local Development Framework Core Strategy and Development Policies*.

New Forest National Park (2008) *Draft New Forest National Park Management Plan*.

Office of the Deputy Prime Minister (2005) *A Practical Guide to Strategic Environmental Assessment Directive*.

Portsmouth City Council (2006) *Portsmouth City Local Plan (2001-2011)*.

Portsmouth City Council (2005) *The Second Local Transport Plan for Portsmouth (2006/7 – 2010/11)*.

Solent Forum (2004) *Solent European Marine Sites Management Plan*.

Solent Forum (2007) *Strategic Guidance for the Solent*.

South East England Regional Assembly (2002) *Regional Economic Strategy for the South east of England 2002-2012*.

South East England Regional Assembly (2009) *The South East Plan: Regional Spatial Strategy for the South East of England (2001-2006)*.

Southampton City Council (2006) *City of Southampton Local Plan Review*.

Southampton City Council (2006) *The Second Local Transport Plan for Southampton (2006-2011)*.

Sussex Biodiversity Partnership (1997) *Sussex Biodiversity Action Plan*.

Test Valley Borough Council (2006) *Test Valley Borough Local Plan*.

West Sussex County Council (2003) *West Sussex County Council Minerals Local Plan*.

West Sussex County Council (2004) *West Sussex County Council Waste Local Plan*.

West Sussex County Council (2006) *West Sussex Transport Plan*.

12.11.2 Websites

Biodiversity Action Reporting System (accessed 2009): <http://www.ukbap-reporting.org.uk/>

Channel Coastal Observatory (accessed 2009): <http://www.channelcoast.org/>

Environment Agency (accessed 2009): <http://www.environment-agency.gov.uk/>

Joint Nature Conservation Committee (accessed 2009): <http://www.jncc.gov.uk/>

Multi-Agency Geographic Information for the Countryside (accessed 2009): <http://www.magic.gov.uk/>

Natural England (accessed 2009): <http://www.naturalengland.org.uk/>

Office of National Statistics (accessed 2009): <http://www.statistics.gov.uk>

Solent Forum (accessed 2009): http://www.solentpedia.info/our_economy_and_industries/

12.12 Appendix L Water Framework Directive Assessment

Department of Environment, Food and Rural Affairs (2006b) *Shoreline Management Plan Guidance Volume 2: Procedures*. 77pp

Environment Agency. *Assessing Shoreline Management Plans against the requirements of the Water Framework Directive. Guidance and Background Information*.

Royal Haskoning (2008) *Water Framework Directive: Retrospective Assessment for the River Tyne to Flamborough Head SMP2*

I3 MAPPED DATA

I3.1 Main SMP Document- Policy Maps

Basemapping

Map information based upon the Ordnance Survey 1:10,000 Raster Tiles (provided under licence, © Crown Copyright) New Forest District Council Licence number 100026220.

Floodplain Mapping

The 2115 Indicative Floodplain (1 in 200 year) data obtained in 2008 from Partnership for Urban South Hampshire (PUSH) covering Hampshire and 2108 Flood Risk Area (1 in 200 year) data obtained from Environment Agency in 2008 covering West Sussex.

Indicative Erosion Zones

Data generated using Appendix C which contains the details of coastal dynamics, defence data and shoreline interactions that have supported the SMP2 development.

International and National Nature Conservation Designation

For clarity of presentation, this combined datasets for Special Areas of Conservation (SAC), Special Protection Areas (SPA), Ramsar sites and Sites of Special Scientific Interest (SSSI). These datasets were obtained from Natural England website (<http://www.naturalengland.org.uk/>) in 2008.

Important Heritage Sites

For clarity of presentation the data mapped showed all statutory designated heritage features combined including Scheduled Ancient Monuments, Conservation Areas, Listed Buildings, Protected Wrecks and Registered Parks and Gardens. The datasets were obtained from a number of organisations:

- Chichester District Council
- English Heritage
- Hampshire County Council

Managed Realignment and No Active Intervention Extents

Data showing the extents of the potential Managed Realignment and No Active Intervention sites were taken from the Solent Dynamic Coast Project (SDCP) 2008.

Policy Unit boundaries

These were defined as part of the SMP and mapped accordingly.

13.2 Appendix C Baseline Process Understanding

13.2.1 Part C2 Defence Assessment

Annex C2.1 Location, Type, Residual Life and Condition of Existing Known Defences

Data obtained from Chichester Harbour Conservancy

GIS data was obtained from Chichester Harbour Conservancy in May 2008. This data covered the coastline from Pagham to East Head.

Data obtained from Chichester District Council

Data was obtained from Chichester District Council in September 2008 showing the location, type, residual life and condition of defences in Chichester Harbour. This data was incorporated into final GIS data used for mapping.

Data obtained from Havant, Portsmouth and Gosport Partnership

GIS data was obtained from Havant, Portsmouth and Gosport Partnership in June 2009. This data covered Havant Borough Council, Portsmouth City Council, Gosport Borough Council, Fareham District Council and Eastleigh Borough Council frontages.

Data obtained from New Forest District Council

GIS data was obtained from New Forest District Council in 2007. This data covered the coastline from Hurst Spit to Calshot.

Data obtained from Southampton City Council

Data was obtained from Southampton City Council in 2008 showing the location, type, residual life and condition of defences in Chichester Harbour. This data was incorporated into final GIS data used for mapping.

Data for Southampton Water

Data on the location and type of defences for the west side of Southampton Water from Calshot to Redbridge was obtained through interpretation of Aerial Photography. This data was incorporated into final GIS data used for mapping.

Annex C2.2 Shoreline Overview

Data obtained from Environment Agency

Datasets were obtained from the Environment Agency in 2008. The datasets covered the areas listed below:

- EA National maintainer file for Sussex Coast
- EA National maintainer file for Hampshire
- EA Regional maintainer file covering Chichester Harbour

Data obtained from Hampshire County Council

Data showing district boundaries were obtained from Hampshire County Council in 2008.

Data obtained from Havant, Portsmouth and Gosport Partnership

Maps were provided by the Gosport, Portsmouth and Havant partnership in 2010. This data was incorporated into final GIS data used for mapping.

Data obtained from Southampton City Council.

Maps were provided by Southampton City Council in 2008 covering the River Itchen. This data was incorporated into final GIS data used for mapping.

Annex C.2.2 Landownership

Floodplain Mapping

The 2115 Indicative Floodplain (1 in 200 year) data obtained in 2008 from Partnership for Urban South Hampshire (PUSH) covering Hampshire and 2108 Flood Risk Area (1 in 200 year) data obtained from Environment Agency in 2008 covering West Sussex.

Data obtained from Hampshire County Council

Data showing district boundaries and land owned by the County were obtained from Hampshire County Council in 2008.

Public Coastal Landownership

A number of datasets were obtained in 2008 showing the locations of public coastal landownership. These were obtained from the following organizations:

- Chichester District Council
- Chichester Harbour Conservancy
- Crown Estate
- Eastleigh Borough Council
- Fareham Borough Council
- Gosport Borough Council
- Havant Borough Council
- New Forest District Council
- Portsmouth City Council
- Southampton City Council
- West Sussex County Council

13.2.2 Part C5.2 Coastal Flood Risk Maps

Floodplain Mapping

The 2007 Flood Zone 3 data (1 in 200 year) data obtained from Environment Agency in 2007. The 2115 Indicative Floodplain (1 in 200 year) data obtained in 2008 from Partnership for Urban South Hampshire (PUSH) covering Hampshire and 2108 Flood Risk Area (1 in 200 year) data obtained from Environment Agency in 2008 covering West Sussex.

National Property Dataset

The National Property dataset 2005 was obtained from Environment Agency in 2009.

Ward and Local Authority Boundaries

Ward and local authority boundary data was obtained from Hampshire and West Sussex County Council in 2008.

I3.2.3 Part C5.3 Intertidal Mapping

Intertidal Mudflat and Saltmarsh Data

Extent of existing mudflat and saltmarsh was obtained from the Solent Dynamic Coast Project (2008).

I3.2.4 Part C5.4 Erosion Risk Mapping

Floodplain Mapping

The 2115 Indicative Floodplain (1 in 200 year) data obtained in 2008 from Partnership for Urban South Hampshire (PUSH) covering Hampshire and 2108 Flood Risk Area (1 in 200 year) data obtained from Environment Agency in 2008 covering West Sussex.

Policy Unit Boundaries

These were defined as part of the SMP and mapped accordingly.

Mapped Shoreline Defences

A final GIS shapefile was created using information obtained from local authorities as detailed in section I3.2.1.

Indicative Erosion Zones

GIS shapefiles for indicative erosion zones were created for the SMP using a number of sources including Historical Photography Interpretation (HPI), mean high water contour, Coastal Defences Strategy Studies (CDS), National Coastal Erosion Risk Mapping (NCERM) database, Future Coast, Solent Dynamic Coast Project (SDCP) and beach management activities.

I3.3 Appendix D Theme Maps

I3.3.1 Part D2 Natural Environment

Basemapping

Map information based upon the Ordnance Survey 1:250,000 Raster Tiles (provided under licence, © Crown Copyright) New Forest District Council Licence number 100026220.

Data obtained from the MAGIC website

Data on RSBP nature sites were obtained from the government website MAGIC (Multi-Agency Geographic Information for the Countryside). These datasets were obtained in 2008. Copyright information is available on the website:

www.magic.gov.uk

Data obtained from Hampshire County Council

Datasets showing Hampshire Wildlife Trust Reserves and Sites of Importance for Nature Conservation (SINC) boundaries were obtained in 2008.

Data obtained from Natural England

A number of datasets were obtained from Natural England.

(<http://www.naturalengland.org.uk/>) These datasets were obtained in 2008:

- Local Nature Reserves
- National Nature Reserves
- Ramsar Sites
- Special Areas of Conservation
- Special Protection Areas
- Sites of Special Scientific Interest

Data obtained from Sussex Biodiversity Record Centre

Data showing Sussex Wildlife Trust reserve boundaries were obtained in 2008.

Data obtained from West Sussex County Council

Data showing Sites of Nature Conservation Importance (SNCI) boundaries were obtained in 2008.

13.3.2 Part D3 Landscape and Character

Basemapping

Map information based upon the Ordnance Survey 1:250,000 Raster Tiles (provided under licence, © Crown Copyright) New Forest District Council Licence number 100026220.

Data obtained from New Forest National Park Authority. Data showing Forest National Park boundary were obtained in 2009.

Data obtained from Natural England. Data showing Areas of Outstanding Natural Beauty (ANOB) were obtained from Natural England in 2009.

(<http://www.naturalengland.org.uk/>)

13.3.3 Part D4 Historic Environment

Basemapping

Map information based upon the Ordnance Survey 1:250,000 Raster Tiles (provided under licence, © Crown Copyright) New Forest District Council Licence number 100026220.

Floodplain Mapping

The 2115 Indicative Floodplain (1 in 200 year) data obtained in 2008 from Partnership for Urban South Hampshire (PUSH) covering Hampshire and 2108 Flood Risk Area (1 in 200 year) data obtained from Environment Agency in 2008 covering West Sussex.

Data obtained from Southampton City Council

A number of datasets were obtained from Southampton City Council Historic Environment Team in April 2008. These datasets are:

- Local Areas of Archaeological Importance
- Locally Listed Buildings
- Maritime Monuments Record

Data obtained from Chichester District Council

A number of datasets on were obtained from Chichester Council Historic Environment Team in May and November 2008:

- Archaeological findspots
- Listed Buildings
- Historic Buildings
- Monuments
- Registered Parks and Gardens
- Scheduled Ancient Monuments

Data obtained from Hampshire County Council

A number of datasets were obtained from Hampshire County Council in September 2008. These datasets are:

- Archaeological findspots
- Areas of High Archaeological Importance
- Conservation Areas
- Historic Buildings
- Listed Buildings
- Local Parks and Gardens
- Maritime Sites
- Monuments
- Salterns
- Scheduled Ancient Monuments

Data obtained from English Heritage

Data on Protected Wrecks was obtained from English heritage in September 2008.

Data obtained from Wessex Archaeology

Data on Peat samples locations for Hampshire and West Sussex were supplied from Wessex Archaeology with permission from English Heritage in February 2009.

Data obtained from Portsmouth City Council

A number of datasets were obtained from Portsmouth City Council Historic Environment Team in March 2009. These datasets are:

- Archaeological findspots
- Maritime Sites
- Monuments

13.4 Appendix J Appropriate Assessment

13.4.1 Part J3 Designated Sites

Basemapping

Map information based upon the Ordnance Survey 1:50,000 Raster Tiles (provided under licence, © Crown Copyright) New Forest District Council Licence number 100026220.

Data obtained from Natural England

A number of datasets were obtained from Natural England. (<http://www.naturalengland.org.uk/>) These datasets were obtained in 2008:

- Ramsar Sites
- Special Areas of Conservation
- Special Protection Areas

13.4.2 Annex J2 Wader and Brent geese feeding and Roost Sites

The data showing the locations and importance of bird sites in the Solent were produced by Jonathon Cox Associates in 2009 using original data from Hampshire and Isle of Wight Wildlife Trust as the baseline.

13.4.3 Annex J3 Managed Realignment Sites

Basemapping

Map information based upon the Ordnance Survey 1:250,000 Raster Tiles (provided under licence, © Crown Copyright) New Forest District Council Licence number 100026220.

Data obtained from Natural England

A number of datasets were obtained from Natural England. (<http://www.naturalengland.org.uk/>) These datasets were obtained in 2008:

- Ramsar Sites
- Special Areas of Conservation
- Special Protection Areas

Managed Realignment and No Active Intervention Extents

Data showing the extents of the potential Managed Realignment and No Active Intervention sites were taken from the Solent Dynamic Coast Project (SDCP) 2008.

I3.5 Appendix K Strategic Environment Assessment

I3.5.1 Annex K4 Managed Realignment Sites

Basemapping

Map information based upon the Ordnance Survey 1:250,000 Raster Tiles (provided under licence, © Crown Copyright) New Forest District Council Licence number 100026220.

Managed Realignment and No Active Intervention Extents. Data showing the extents of the potential Managed Realignment and No Active Intervention sites were taken from the Solent Dynamic Coast Project (SDCP) 2008.

I3.5 Water Framework Directive Assessment

Data obtained from Environment Agency

A number of datasets were obtained from Environment Agency in 2009 showing the boundaries for the following water bodies within the North Solent study area:

- Coastal water bodies
- Transitional water bodies
- Groundwater bodies